

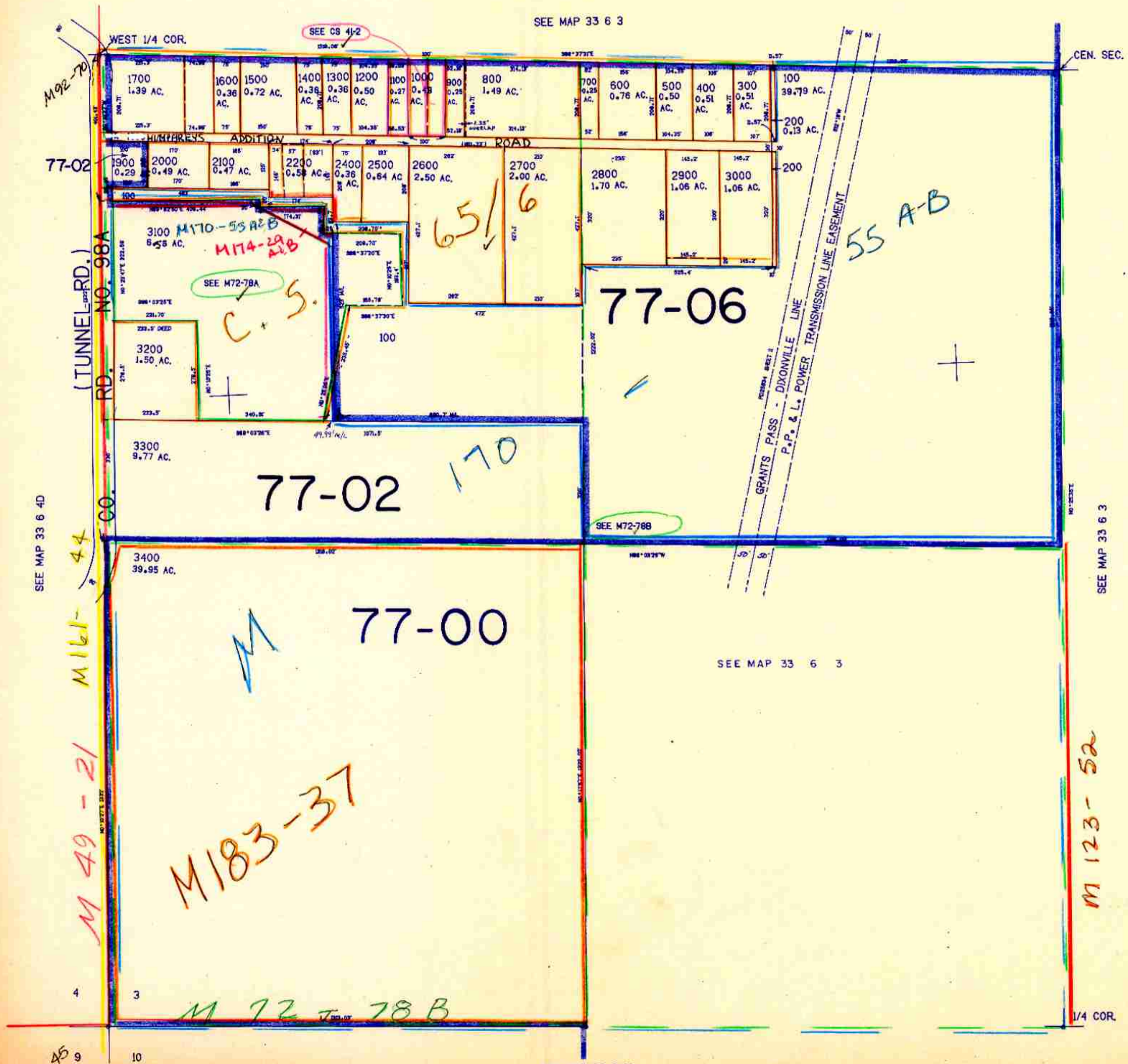
SW1/4 SEC. 3 T.33S. R.6W. W.M.
DOUGLAS COUNTY

REVISED ON
1-12-96

33 6 30

THIS MAP WAS PREPARED FOR
ASSESSMENT PURPOSE ONLY.

1"=200'



CANCEL ACCT NO:
2300
3199
1800

M 54-45

SEE MAP 33 6 10

399,000

33 6 30

22,000

24/6