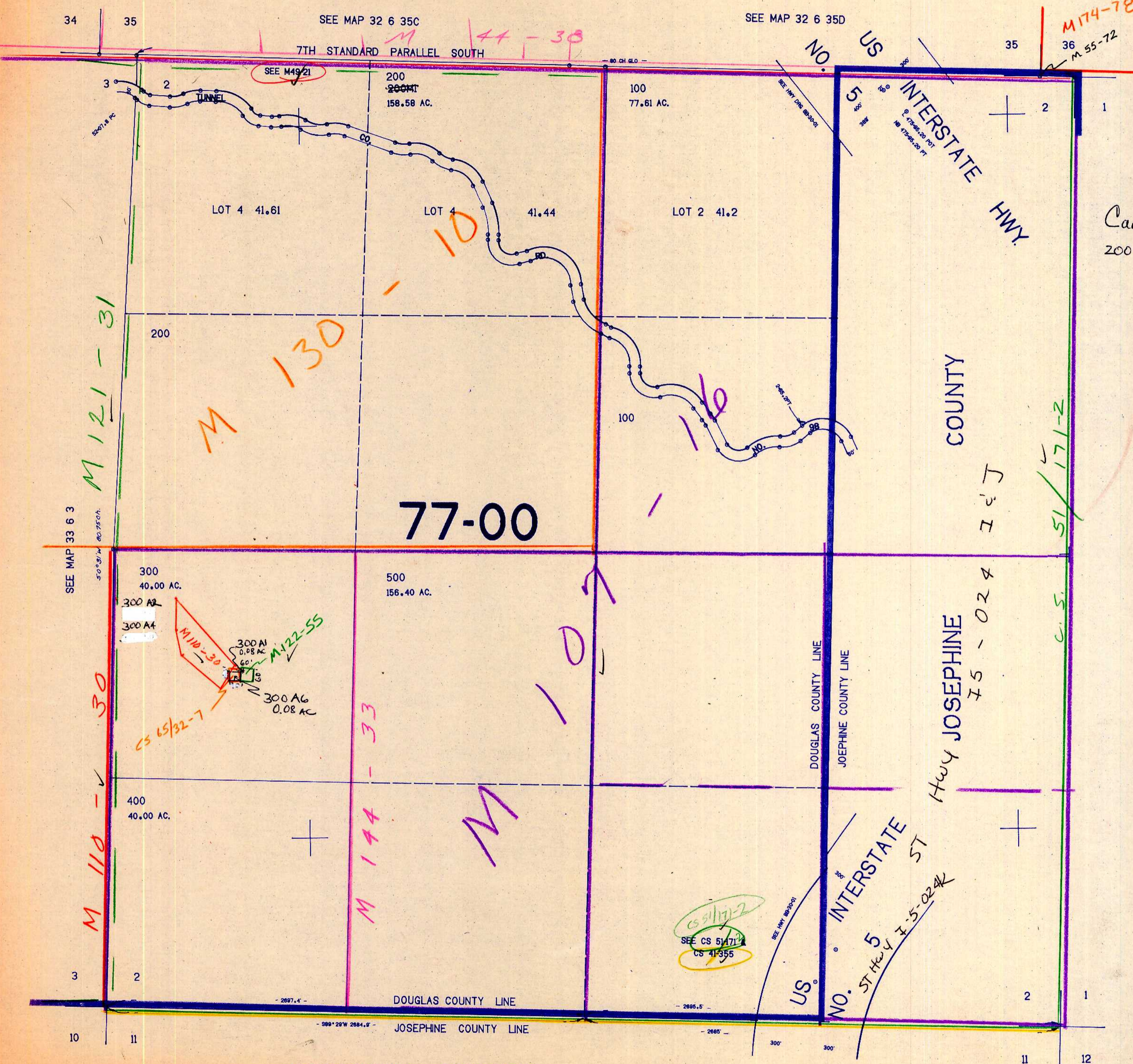


SECTION 2 T.33S. R.6W. W.M.
DOUGLAS COUNTY

33 6 2

THIS MAP WAS PREPARED FOR
ASSESSMENT PURPOSE ONLY.

1"=400'



Cancelled no's
200 mi. 500 mi

DOUGLAS COUNTY LINE
JOSEPHINE COUNTY LINE
JOSEPHINE COUNTY

1,226,000

33 6 2

11/23/88