

T.33S. R.6W. W.M.
DOUGLAS COUNTY

1"=2000'

33 6
& INDEX
GLENDALE

THIS MAP WAS PREPARED FOR
ASSESSMENT PURPOSE ONLY.

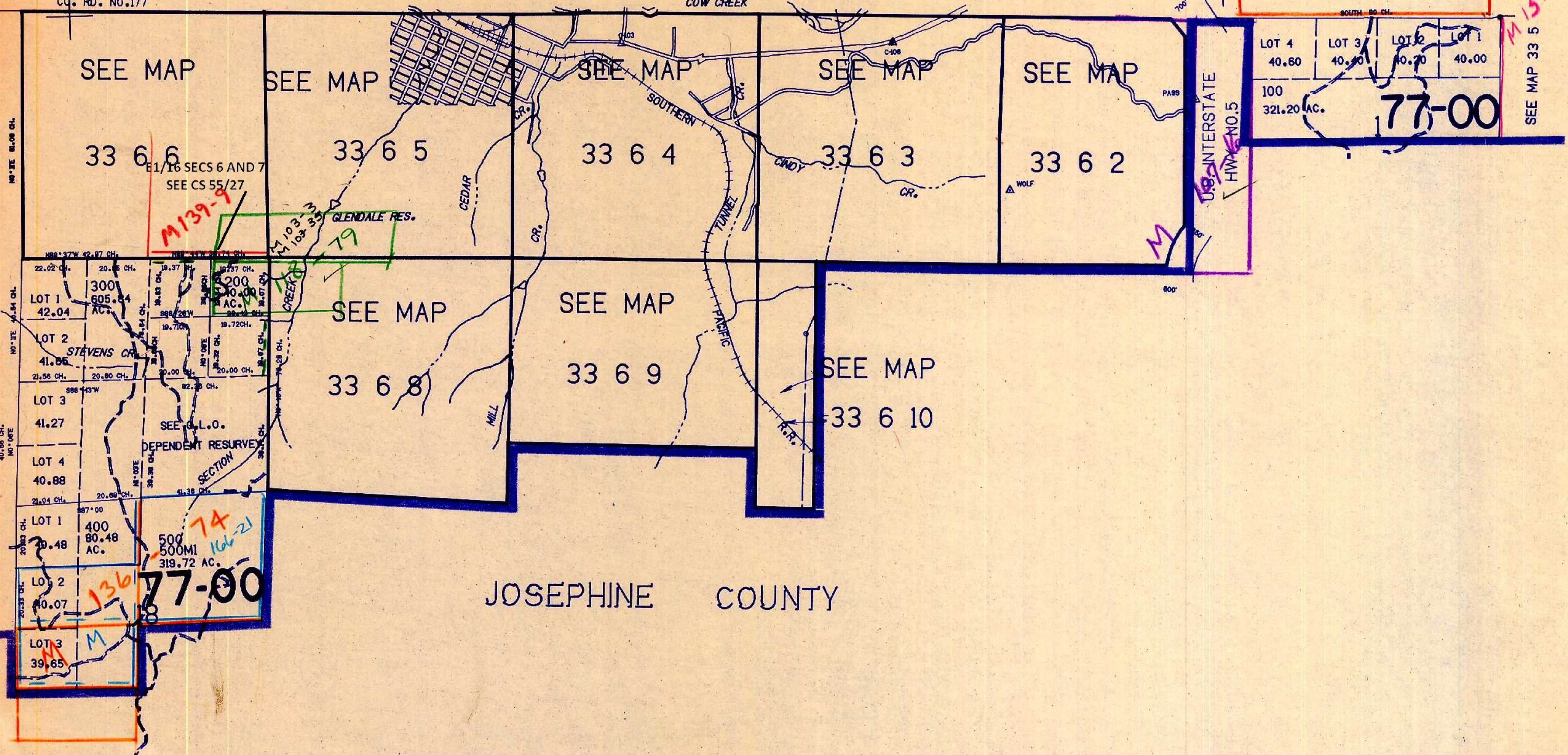
SEE MAP 32 6

CO. RD. NO. 177

COW CREEK

M174-78

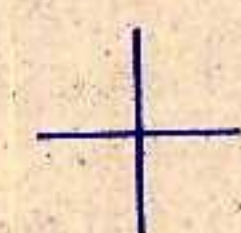
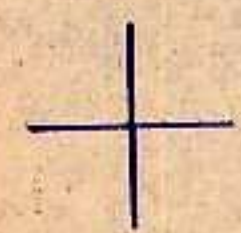
M151-7



SEE MAP 33 7

SEE MAP 33 5

JOSEPHINE COUNTY



380.000

1230.000

33 6
& INDEX
GLENDALE

11/83