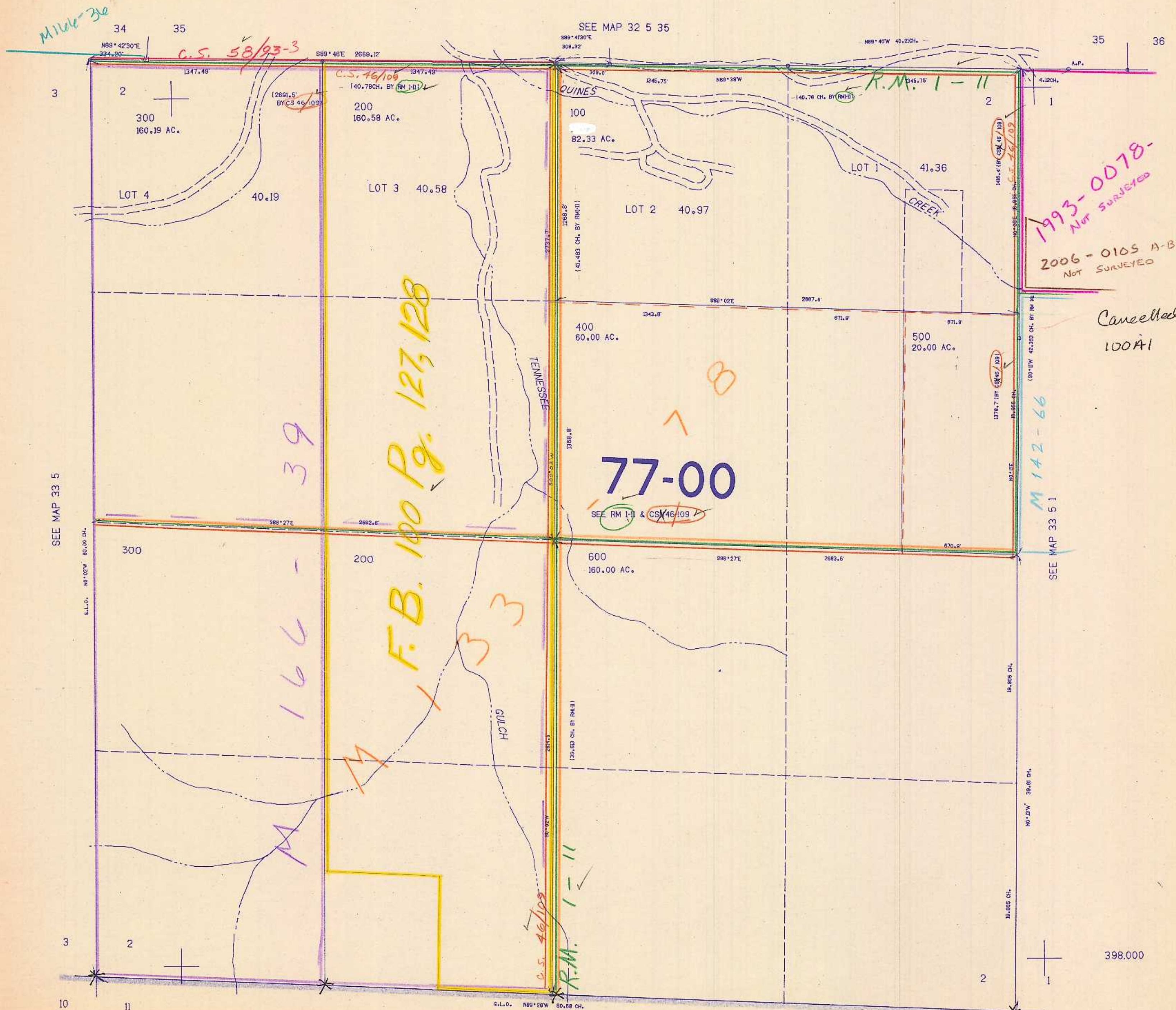


SECTION 2 T.33S. R.5W. W.M.
DOUGLAS COUNTY

33 5 2

THIS MAP WAS PREPARED FOR
ASSESSMENT PURPOSE ONLY.

1"=400'



1993-0078
NOT SURVEYED
2006-0105 A-B
NOT SURVEYED

Cancelled #
100A1

77-00

* see
C.S. 64/76-5
for 1986-89 BLM
Resurvey

33 5 2

7/84 BS