

SECTION 1 T.33S. R.5W. W.M.
DOUGLAS COUNTY

33 5 1

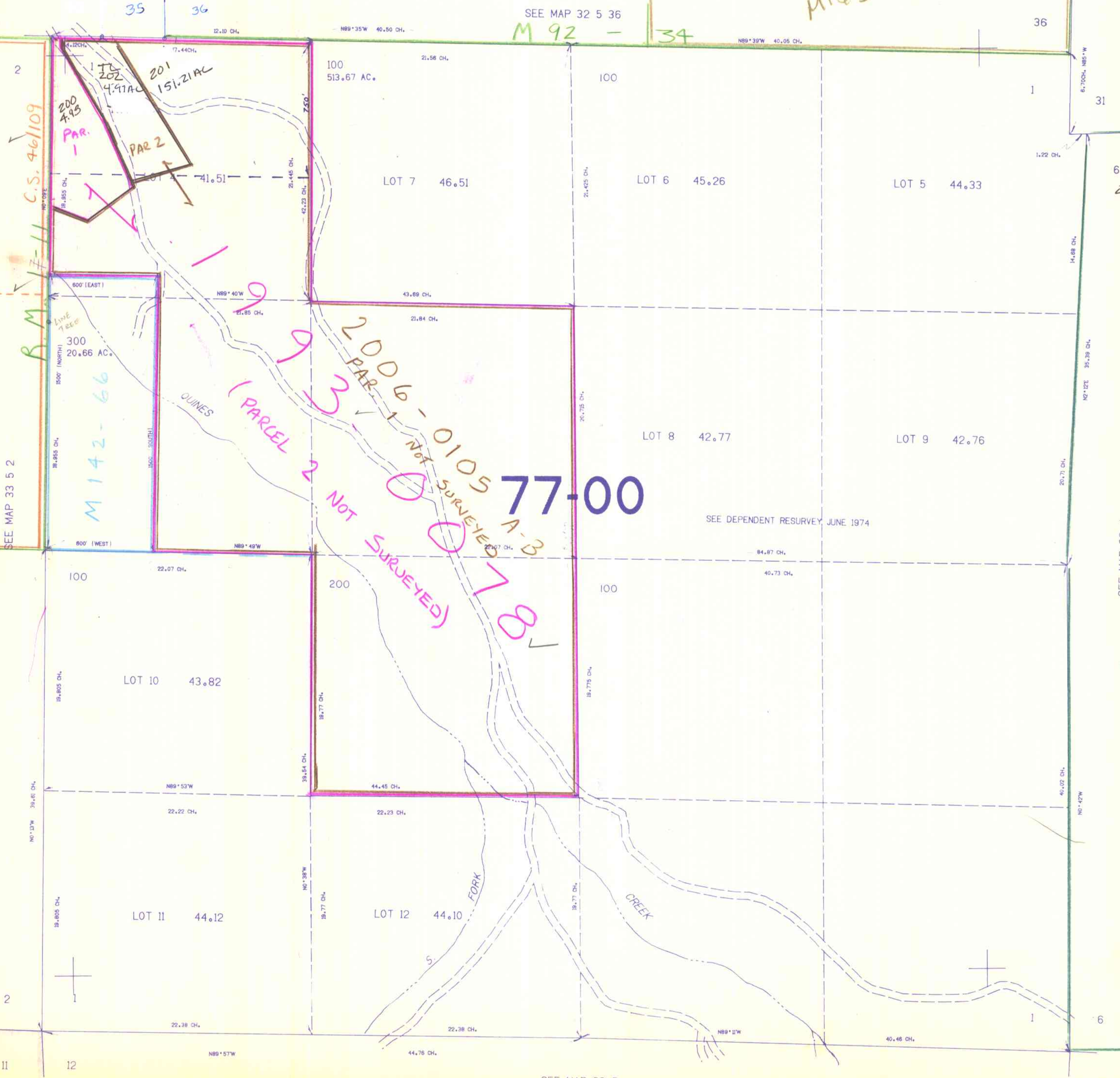
THIS MAP WAS PREPARED FOR
ASSESSMENT PURPOSE ONLY.

1"=400'

M163-54

SEE MAP 32 5 36

M 92 - 34



6
200A1 201A1
202A1

SEE MAP 33 4

M 147-57
A-B

398.000

SEE MAP 33 5

1.267.000

33 5 1

6/89
H.D.