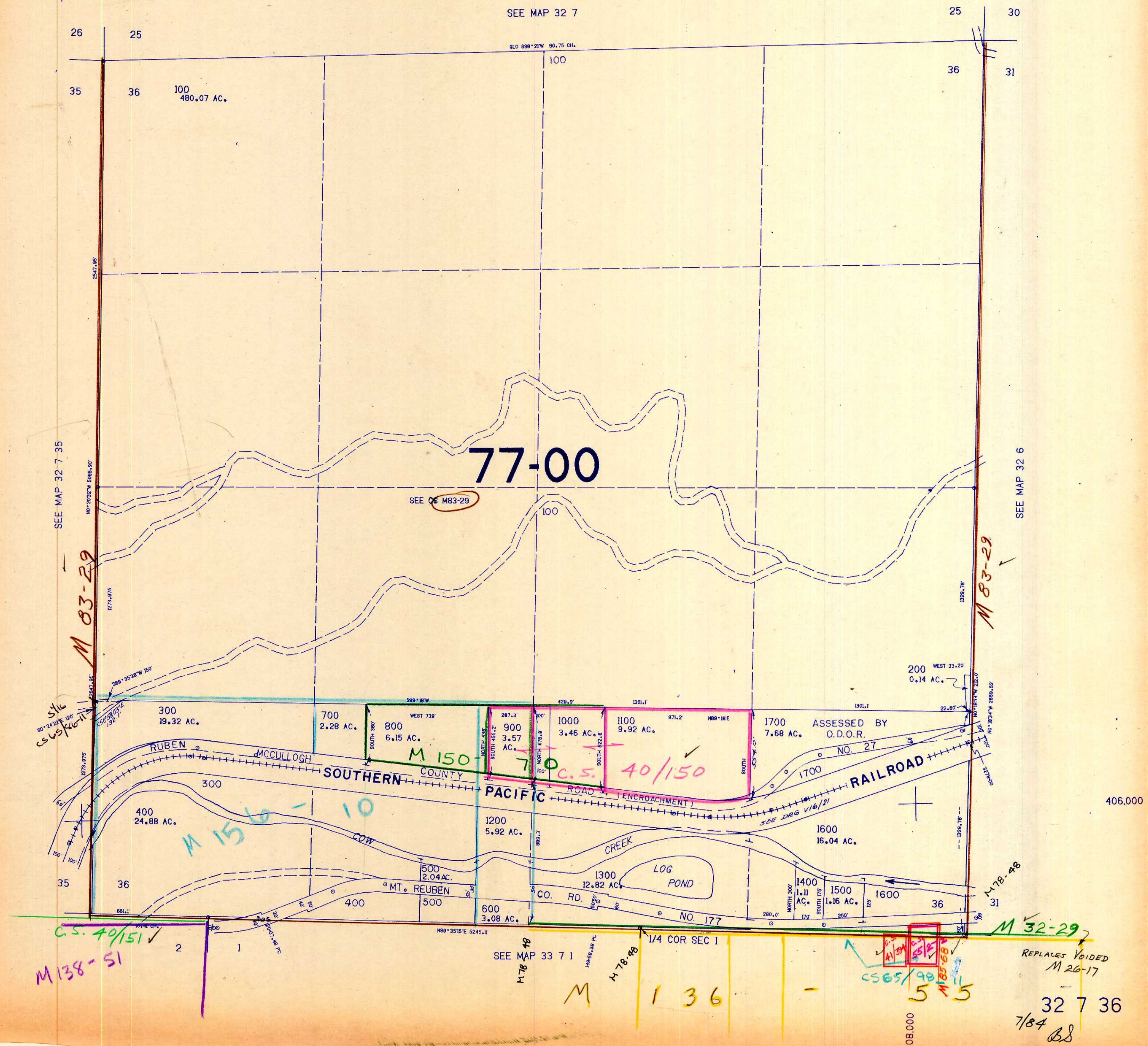


SECTION 36 T.32S. R.7W. W.M.
DOUGLAS COUNTY

32 7 36

THIS MAP WAS PREPARED FOR
ASSESSMENT PURPOSE ONLY.

1"=400'



SEE MAP 32 7 35

SEE MAP 32 7

SEE MAP 32 6

M 83-29

M 83-29

CS 65/16-11

M 150-10

C.S. 40/150

M 138-51

SEE MAP 33 7 1

M 136

CS 65/98

M 32-29

REPLACES VOIDED
M 26-17

32 7 36
7/84 BS

406.000

1208.000