

THIS MAP WAS PREPARED FOR ASSESSMENT PURPOSE ONLY.

SEC.36 T.32S. R.6W. W.M.
DOUGLAS COUNTY
1" = 400'

REVISED ON
8-12-20

32 6 36

77-02

77-00

M110+ -48

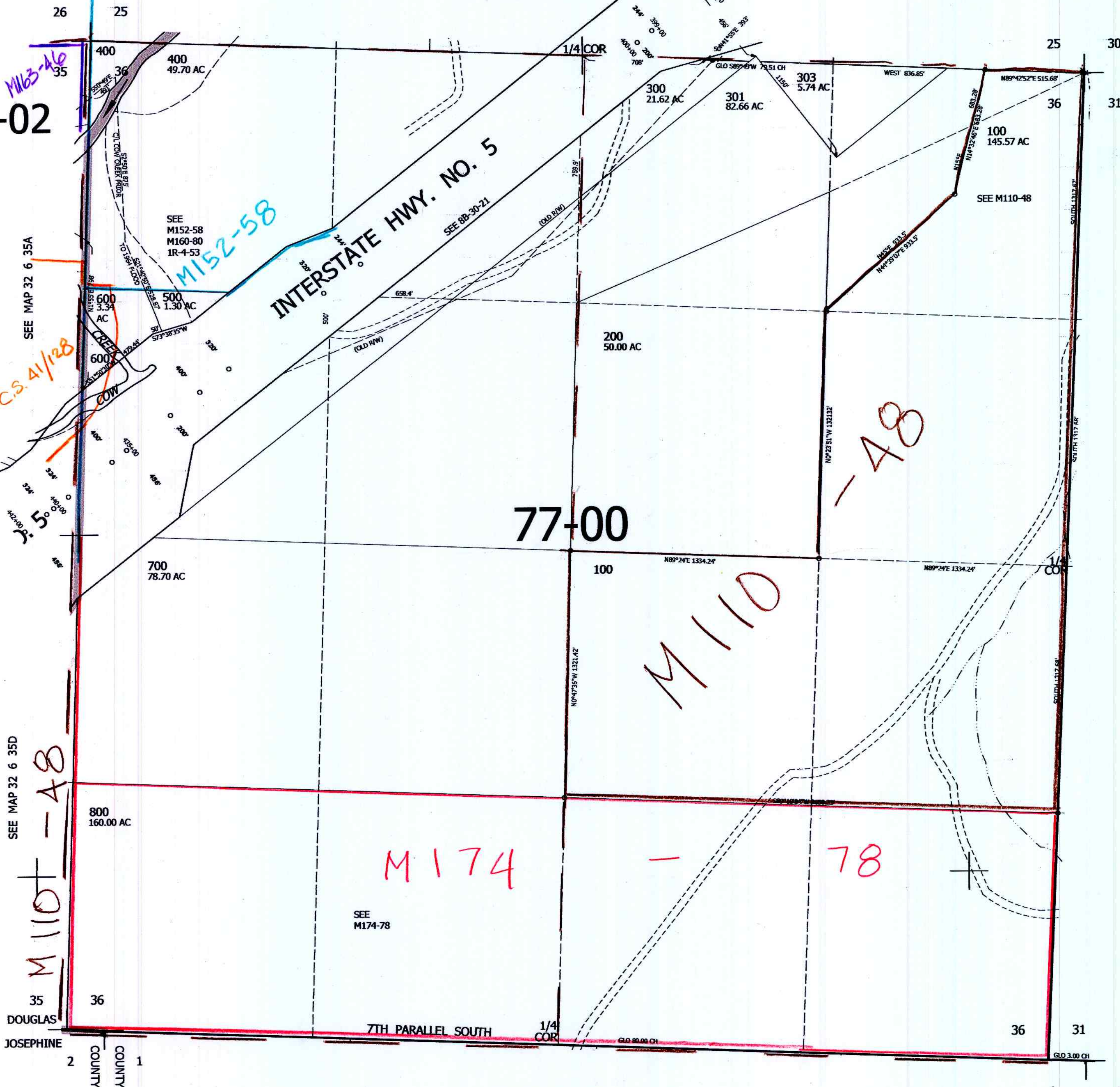
M152-58

M110

M174

78

-48



CANCELLED NO'S
302 301M1 800M1

SEE MAP 32 5 31

SEE MAP 33 6 00

8-18-2022
JCV

32 6 36

4,156,000

405,000