

THIS MAP WAS PREPARED FOR ASSESSMENT PURPOSE ONLY.

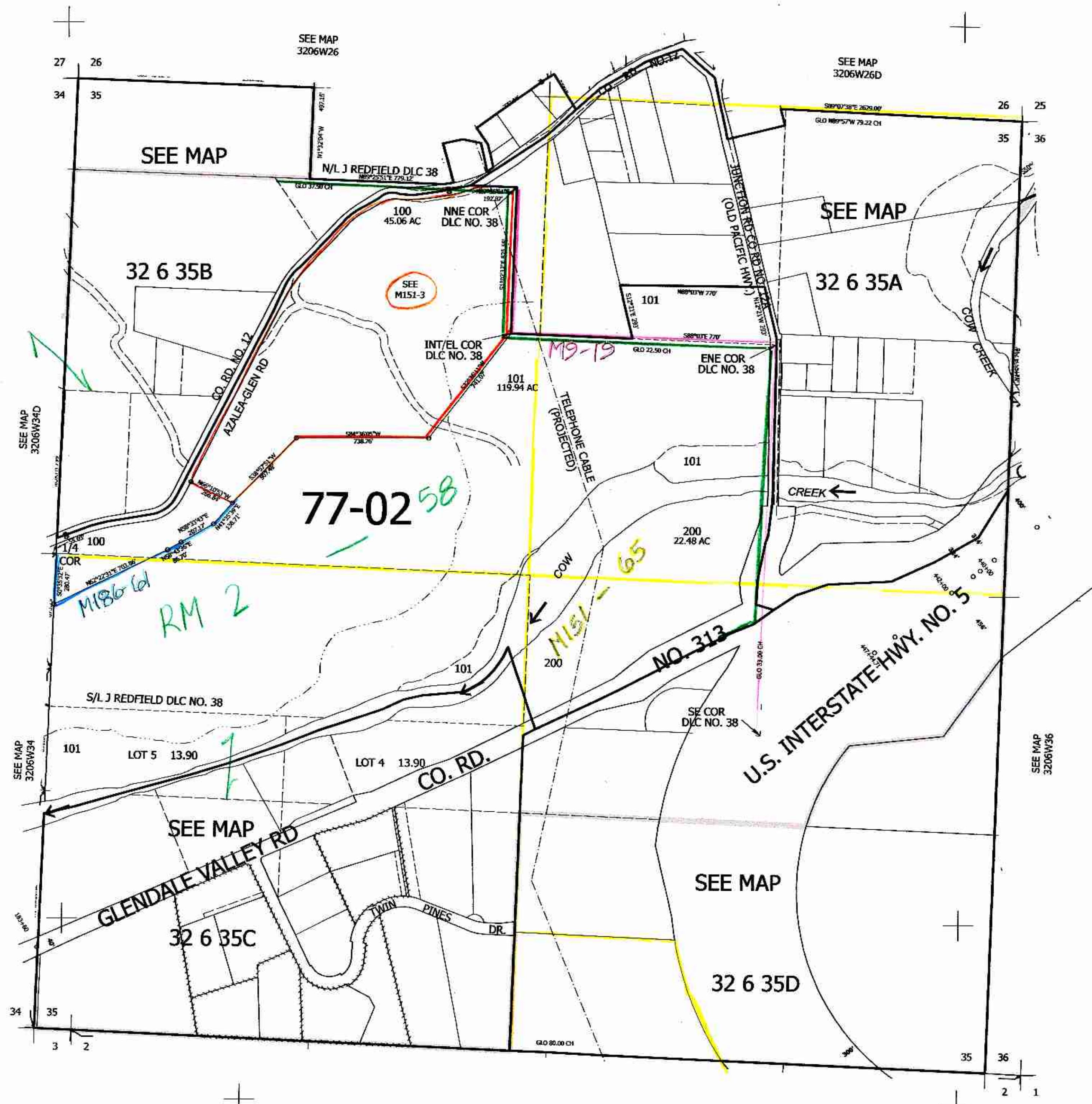
Upper Left:  
123°23'30"W 42°45'23"N  
4144810E 410520N ft

SEC.35 T.32S. R.06W. W.M.  
DOUGLAS COUNTY  
1" = 400'

Date Exported 2025-12-16

320635  
& INDEX

CANCELLED NOS:  
102



SEE MAP  
3306W02

V2026 Bv  
re

320635  
& INDEX

Lower Right:  
123°21'42"W 42°44'17"N  
4152660E 403564N ft