

NE1/4 SEC.31 T.32S. R.6W. W.M.
DOUGLAS COUNTY

32 6 31A

THIS MAP WAS PREPARED FOR
ASSESSMENT PURPOSE ONLY.

1"=200'

APPROX.
1/4 COR.

SEE MAP 32 6

M 62-27
M 59-41
M 27-42

SEE MAP 32 6 31

SEE MAP 32 6 32B

77-00

M 27-42

M 71-23

M 50-77

M 59-41

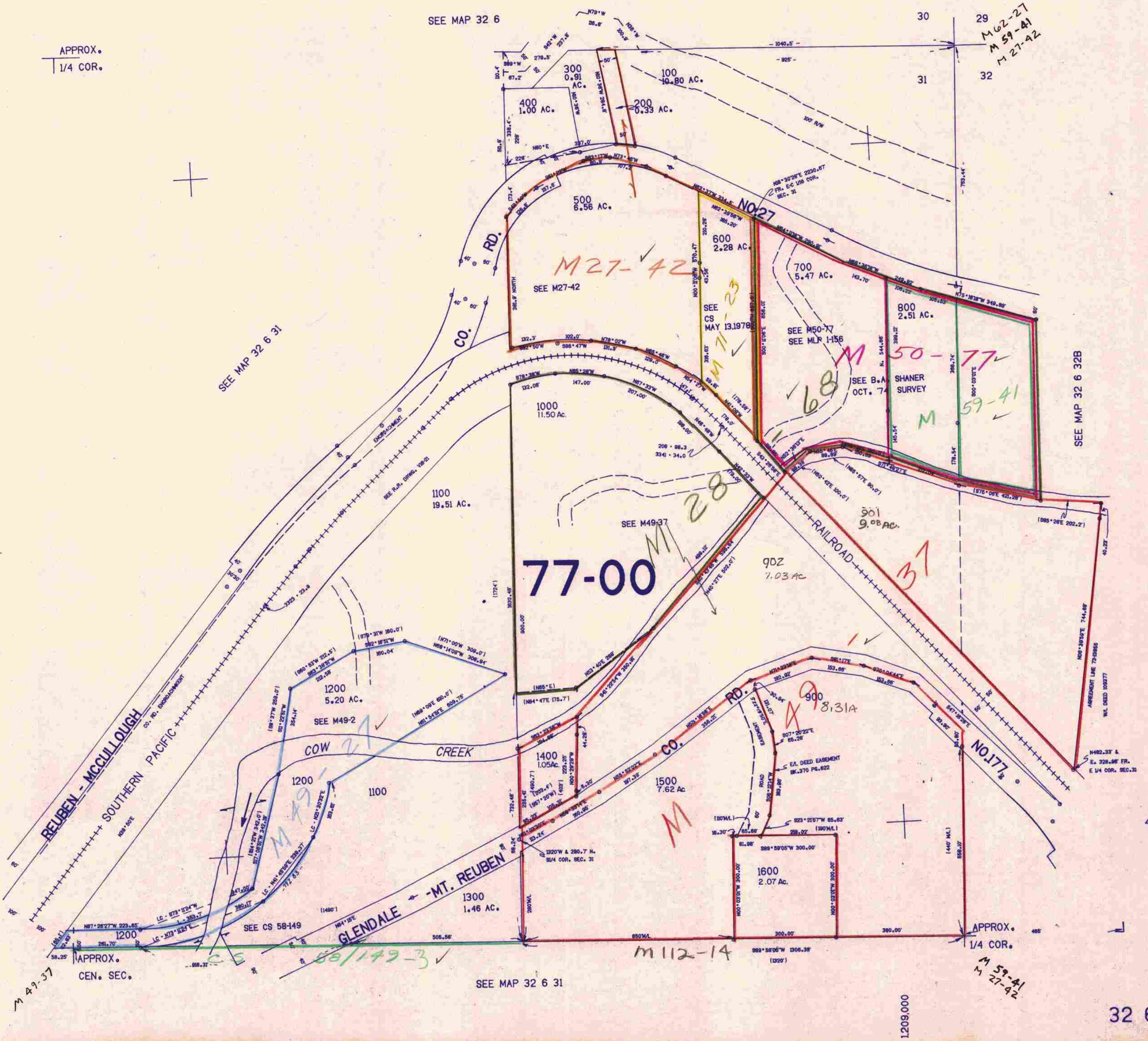
M 28

M 900

M

M 112-14

M 59-41
M 27-42



APPROX.
CEN. SEC.

SEE MAP 32 6 31

APPROX.
1/4 COR.

408,000

1209,000

32 6 31A

11/23/28