

SECTION 31 T.32S. R.6W. W.M.  
DOUGLAS COUNTY

32 6 31  
& INDEX

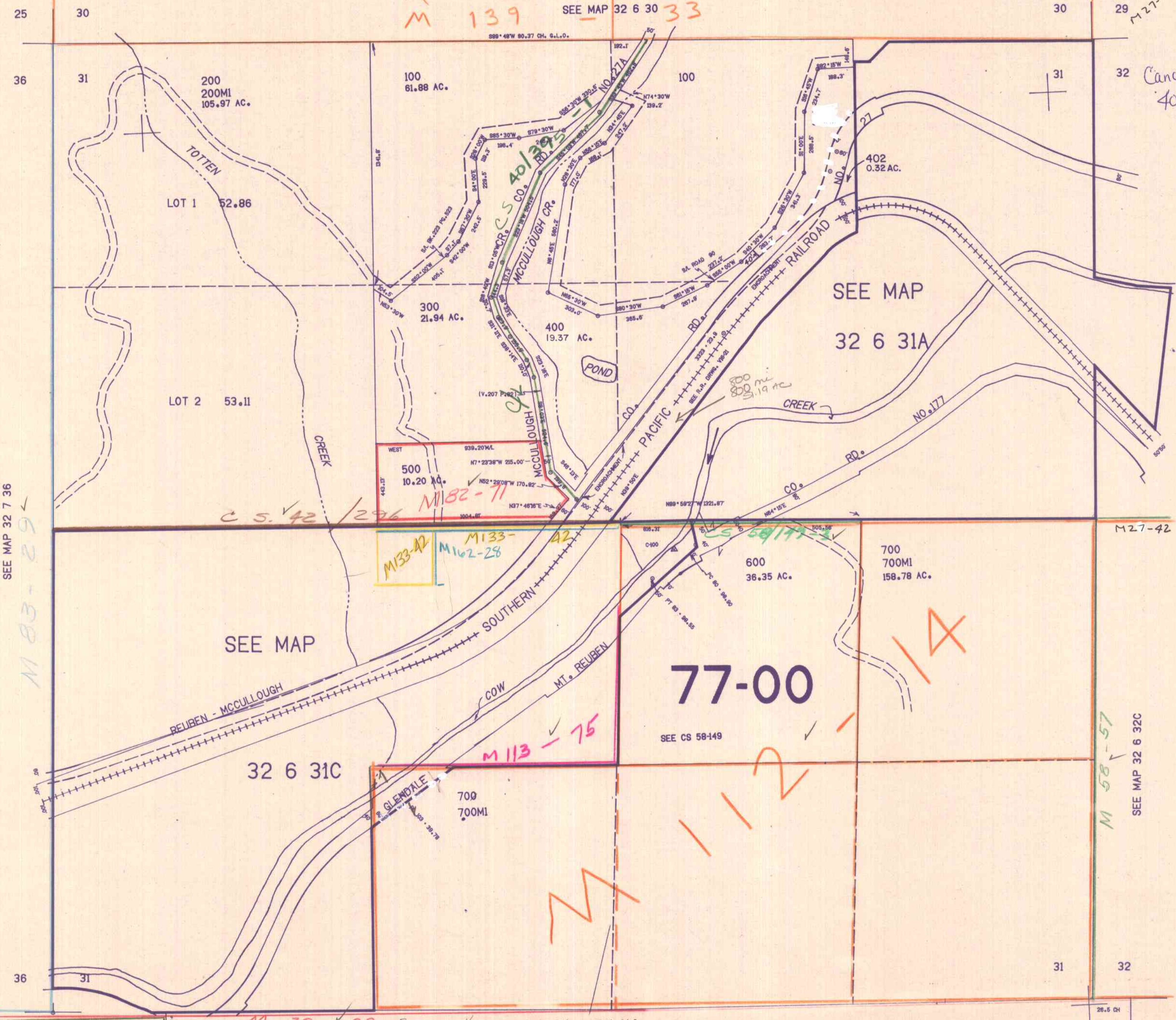
THIS MAP WAS PREPARED FOR  
ASSESSMENT PURPOSE ONLY.

1"=400'

M 125 - 75 &  
M 139 - 33  
SEE MAP 32 6 30

29  
M 27-42

32 Canceled Nos  
401



SEE MAP 32 7 36  
M 83-29

SEE MAP 32 6 32B

M 27-42

SEE MAP 32 6 32C  
M 58-57

M 32-29 REPLACES VOIDED SURVEY  
M 26-17

SEE MAP 33 6 6

M 136-55

32 6 31  
& INDEX

1.209.000

11/83  
2/8