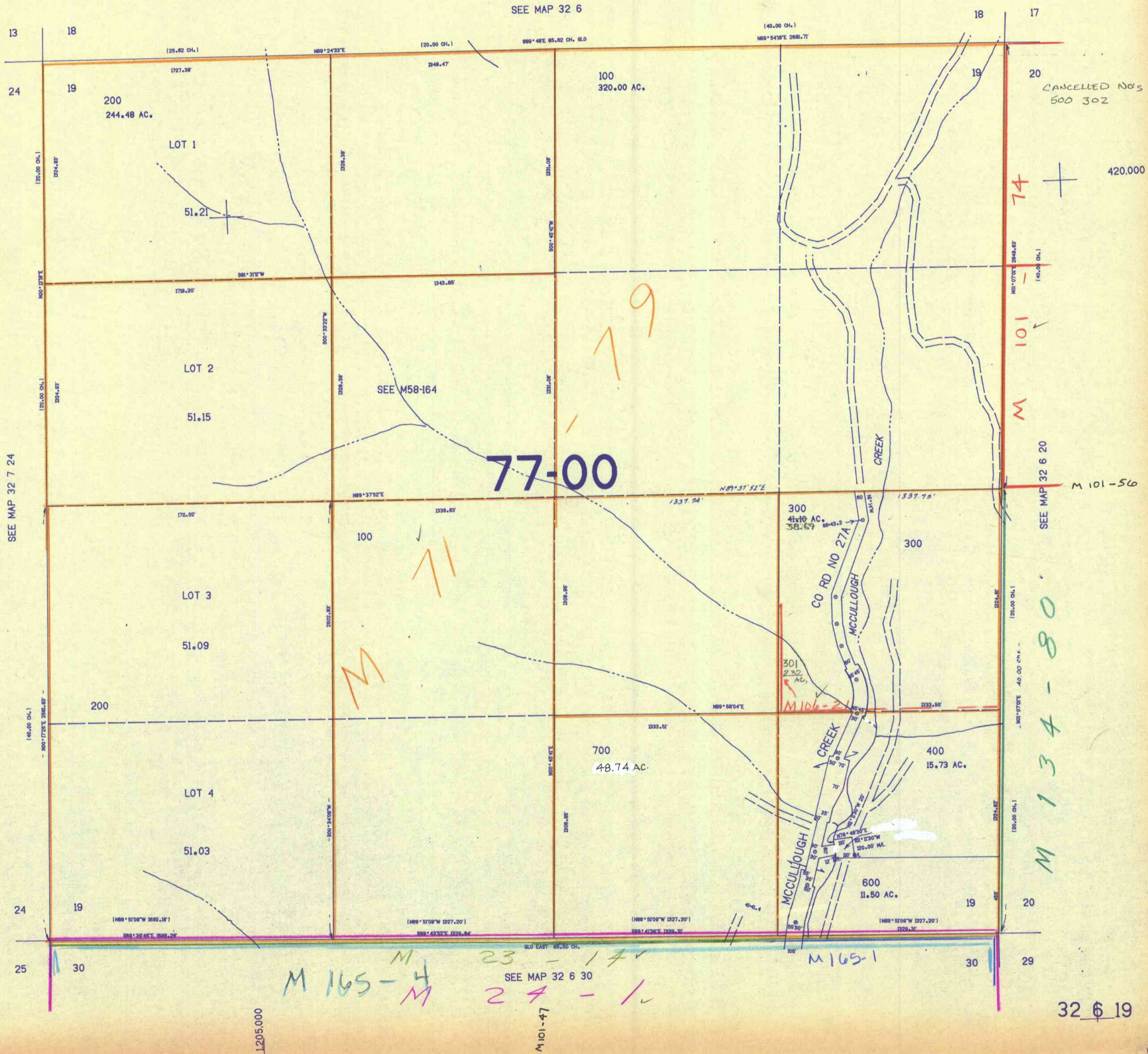


SECTION 19 T.32S. R.6W. W.M.
DOUGLAS COUNTY

1"=400'

THIS MAP WAS PREPARED FOR
ASSESSMENT PURPOSE ONLY.

SEE MAP 32 6



CANCELLED NOS
500 302

420,000

77-00

79

74 +
M 101

M 101-56

M 134-80

M 165-4

23-14

24-1

M 165-1