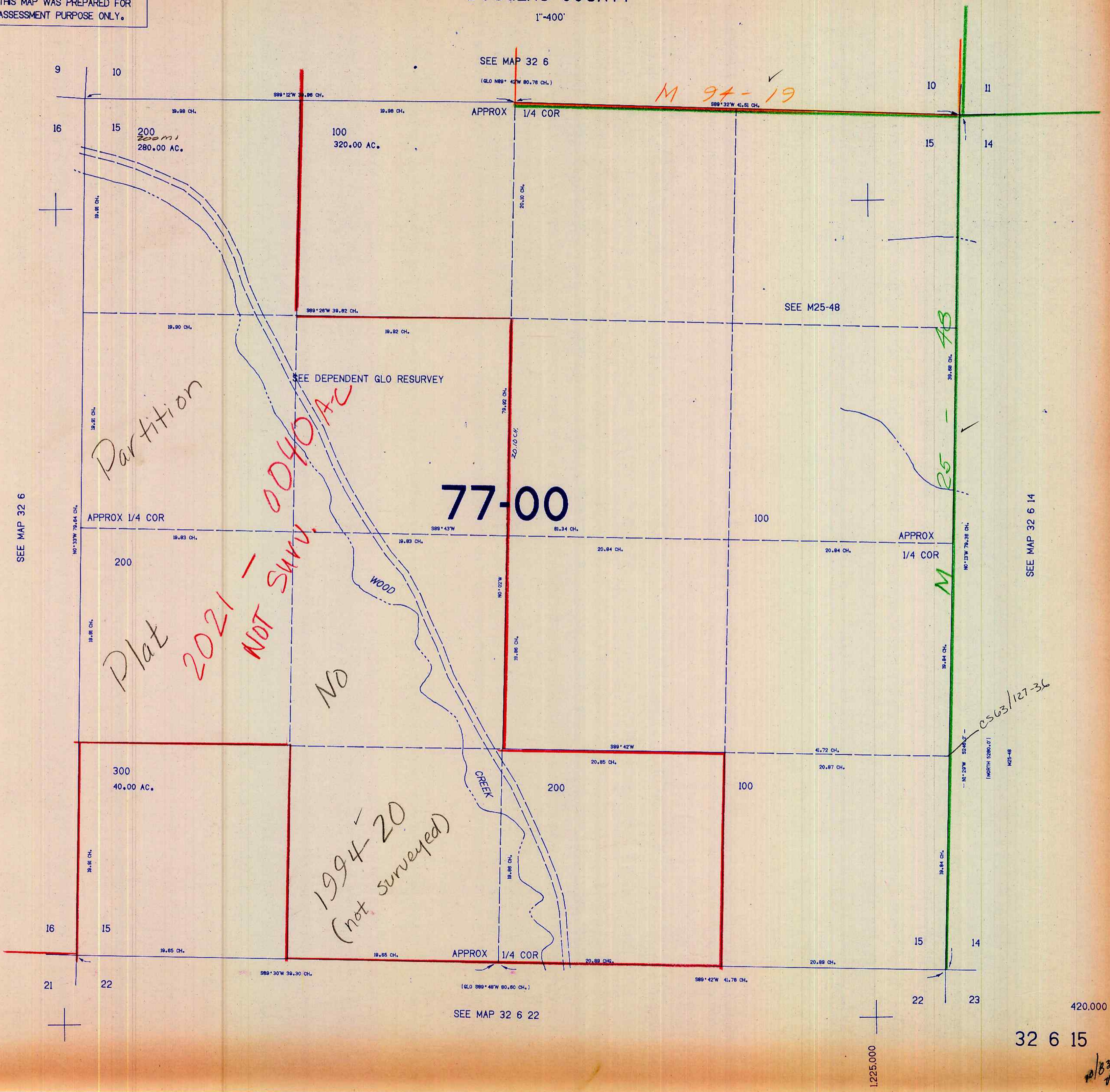


SECTION 15 T.32S. R.6W. W.M.
DOUGLAS COUNTY

32 6 15

THIS MAP WAS PREPARED FOR
ASSESSMENT PURPOSE ONLY.

1"=400'



SEE MAP 32 6

SEE MAP 32 6

(GLO N89° 42'W 80.76 CH.)

APPROX 1/4 COR

M 94-19

200
280.00 AC.

100
320.00 AC.

SEE M25-48

SEE DEPENDENT GLO RESURVEY

77-00

APPROX 1/4 COR

100

APPROX 1/4 COR

200

19.81 CH.

19.81 CH.

19.81 CH.

19.81 CH.

19.81 CH.

19.81 CH.

19.81 CH.

19.81 CH.

19.81 CH.

19.81 CH.

19.81 CH.

19.81 CH.

19.81 CH.

19.81 CH.

19.81 CH.

19.81 CH.

19.81 CH.

19.81 CH.

19.81 CH.

19.81 CH.

19.81 CH.

Plat 2021 - NOT SURV.

NO

1994-20
(not surveyed)

M 25-48

M

CS63/127-36

(NORTH 52°00.0')

N25-48

19.84 CH.

19.84 CH.

19.84 CH.

19.84 CH.

19.84 CH.

19.84 CH.

19.84 CH.

19.84 CH.

19.84 CH.

19.84 CH.

19.84 CH.

19.84 CH.

19.84 CH.

19.84 CH.

SEE MAP 32 6 22

1,225,000

420,000

32 6 15

1/838