

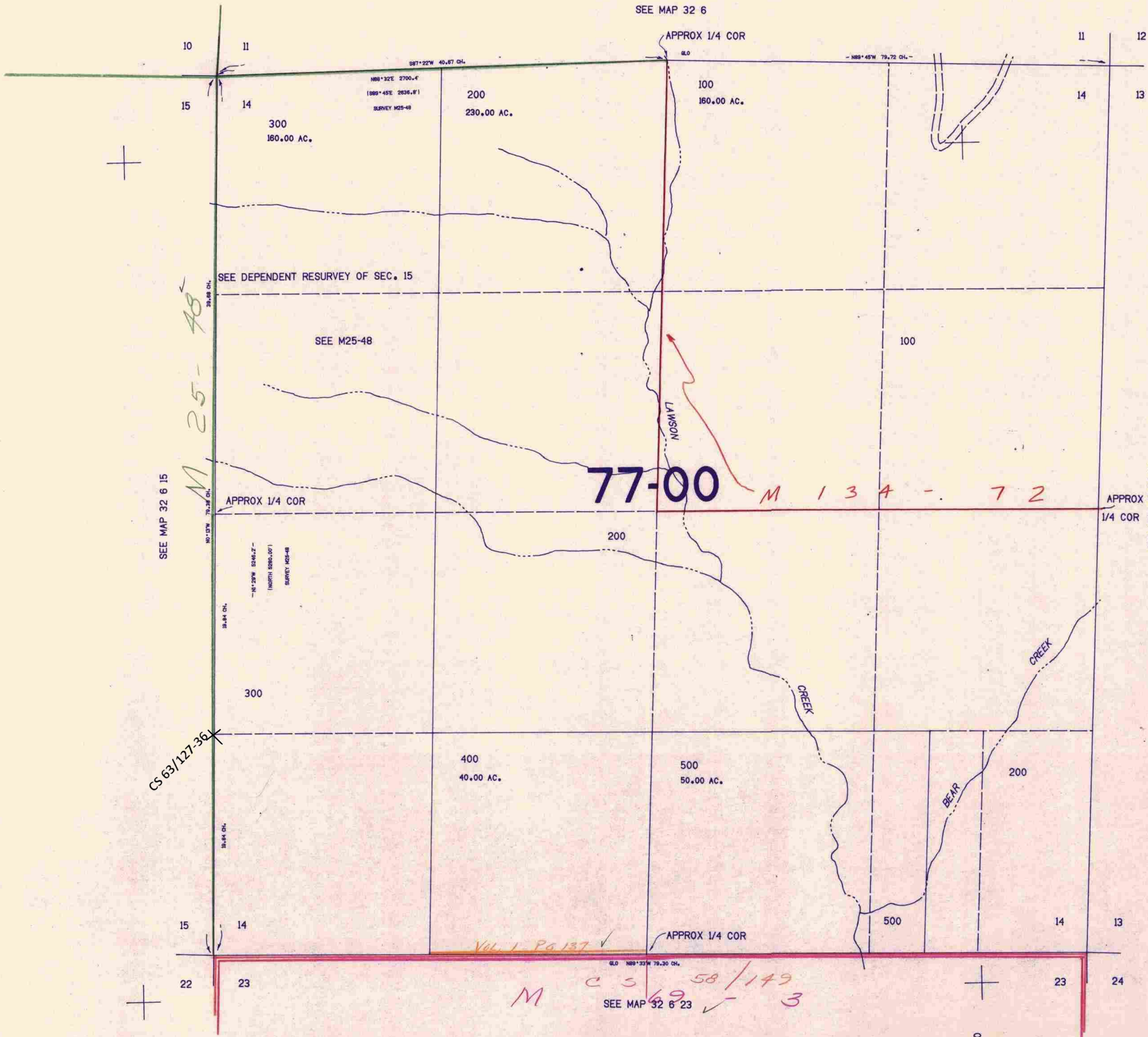
SECTION 14 T.32S. R.6W. W.M.
DOUGLAS COUNTY

32 6 14

THIS MAP WAS PREPARED FOR
ASSESSMENT PURPOSE ONLY.

1"=400'

SEE MAP 32 6



M 25-48
SEE MAP 32 6 15

77-00

M 134 - 72

VIL. 1 - Pg 137
M C S 69 58/149 3
SEE MAP 32 6 23

32 6 14

420,000

1,230,000

10/2/06