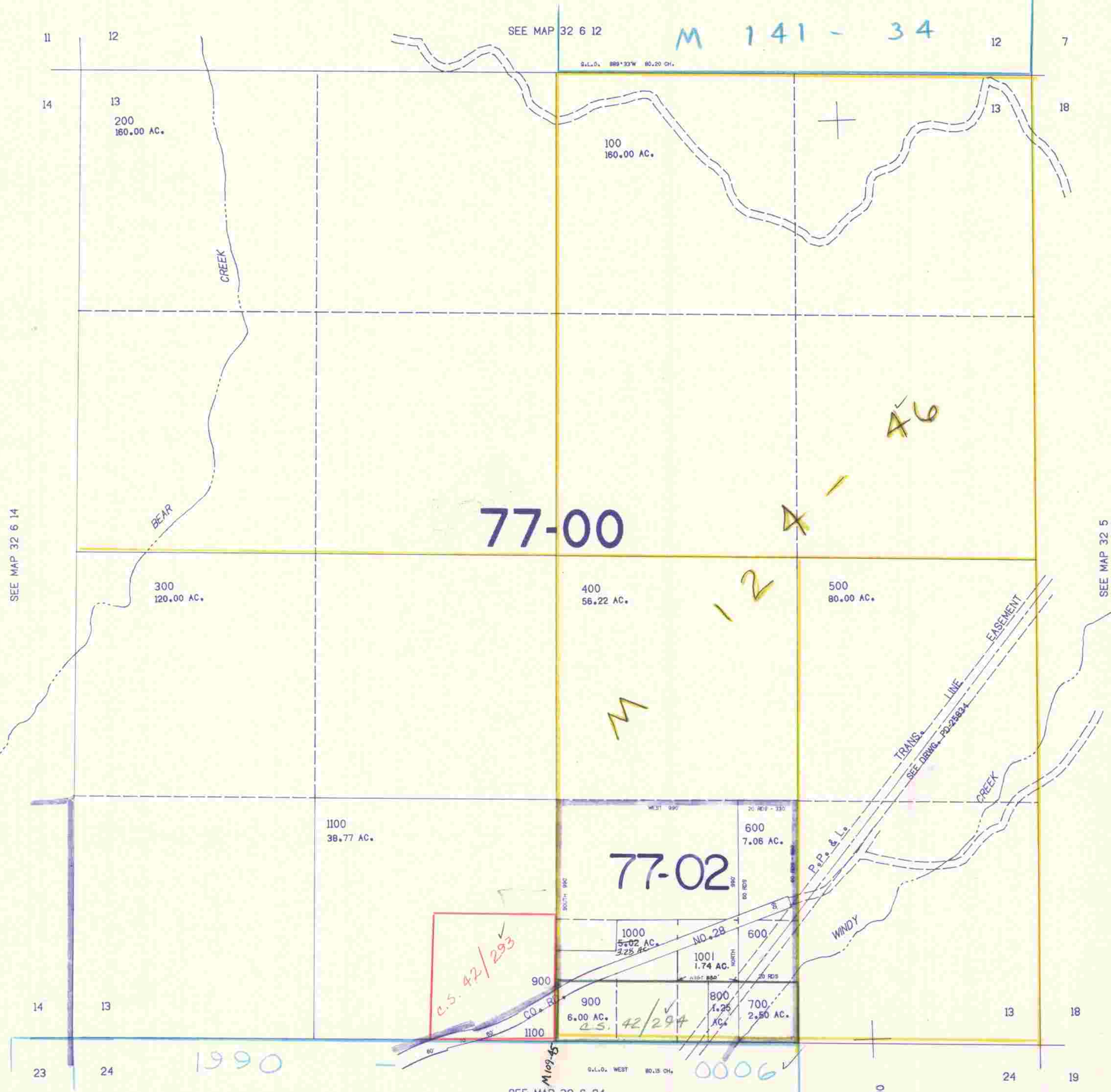


SEC.13 T.32S. R.6W. W.M.
DOUGLAS COUNTY

32 6 13

THIS MAP WAS PREPARED FOR
ASSESSMENT PURPOSE ONLY.

1"=400'



77-00

77-02

C.S. 42/293

C.S. 42/294

0006

1990

M 141 - 34

46

12

SEE MAP 32 6 14

SEE MAP 32 5

SEE MAP 32 6 24

420,000

1,235,000

32 6 13

4/89