

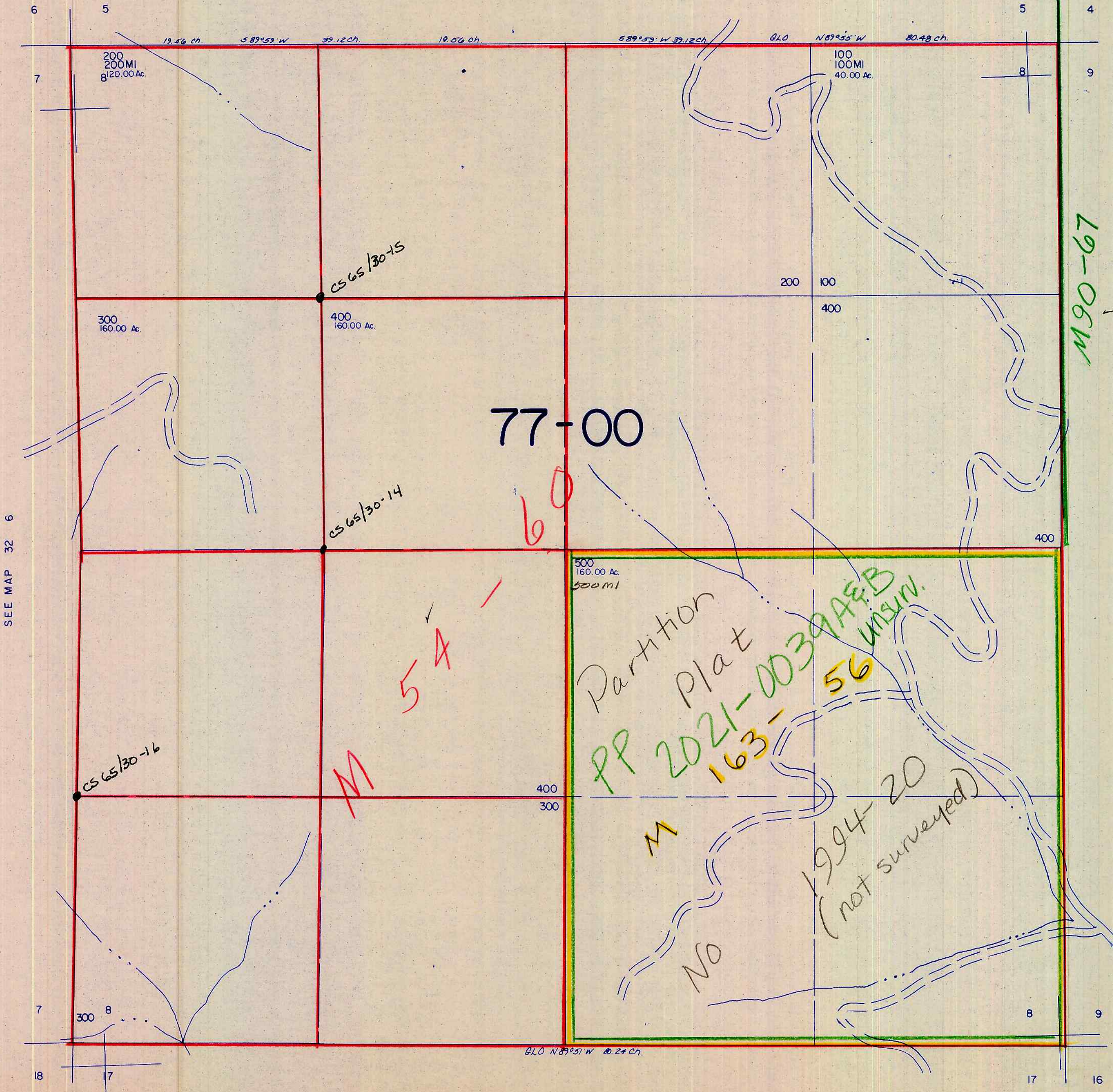
This map was prepared for assessment purposes only.

SECTION 8 T.32 S. R. 6 W. W.M.
DOUGLAS COUNTY

32 6 8

1" = 400'

SEE MAP 32 6



SEE MAP 32 6

SEE MAP 32 6

SEE MAP 32 6

215,000

426,000

32 6 8

12/13/21