

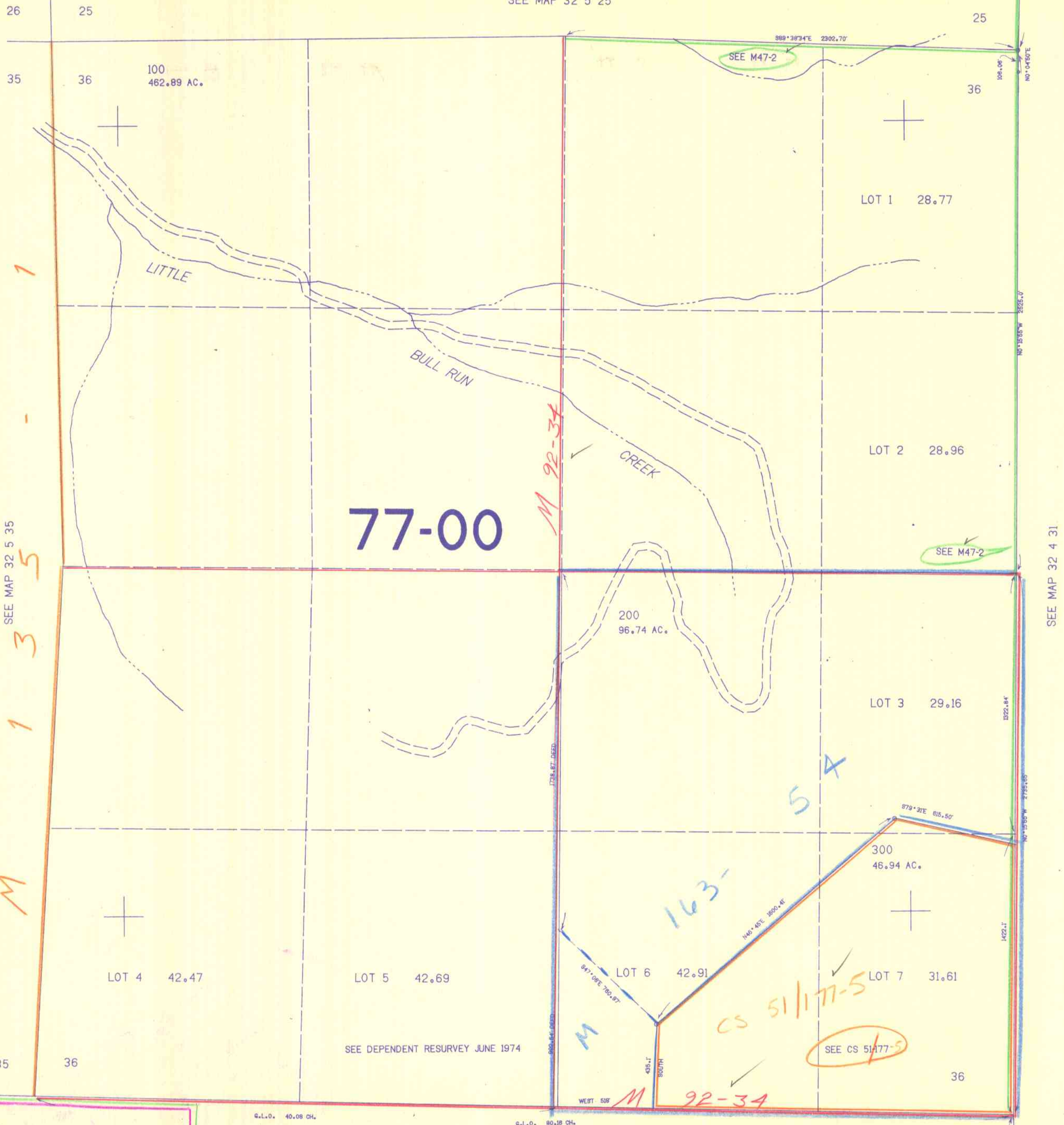
THIS MAP WAS PREPARED FOR ASSESSMENT PURPOSE ONLY.

SECTION 36 T.32S. R.5W. W.M.
DOUGLAS COUNTY

32 5 36

1"=400'

SEE MAP 32 5 25



M
1
3
5
1

54

1993-0078
2006-0105 A-B
1993-0078
NOT SURVEYED
2006-0105
NOT SURVEYED

32 5 36
10/03 BR