

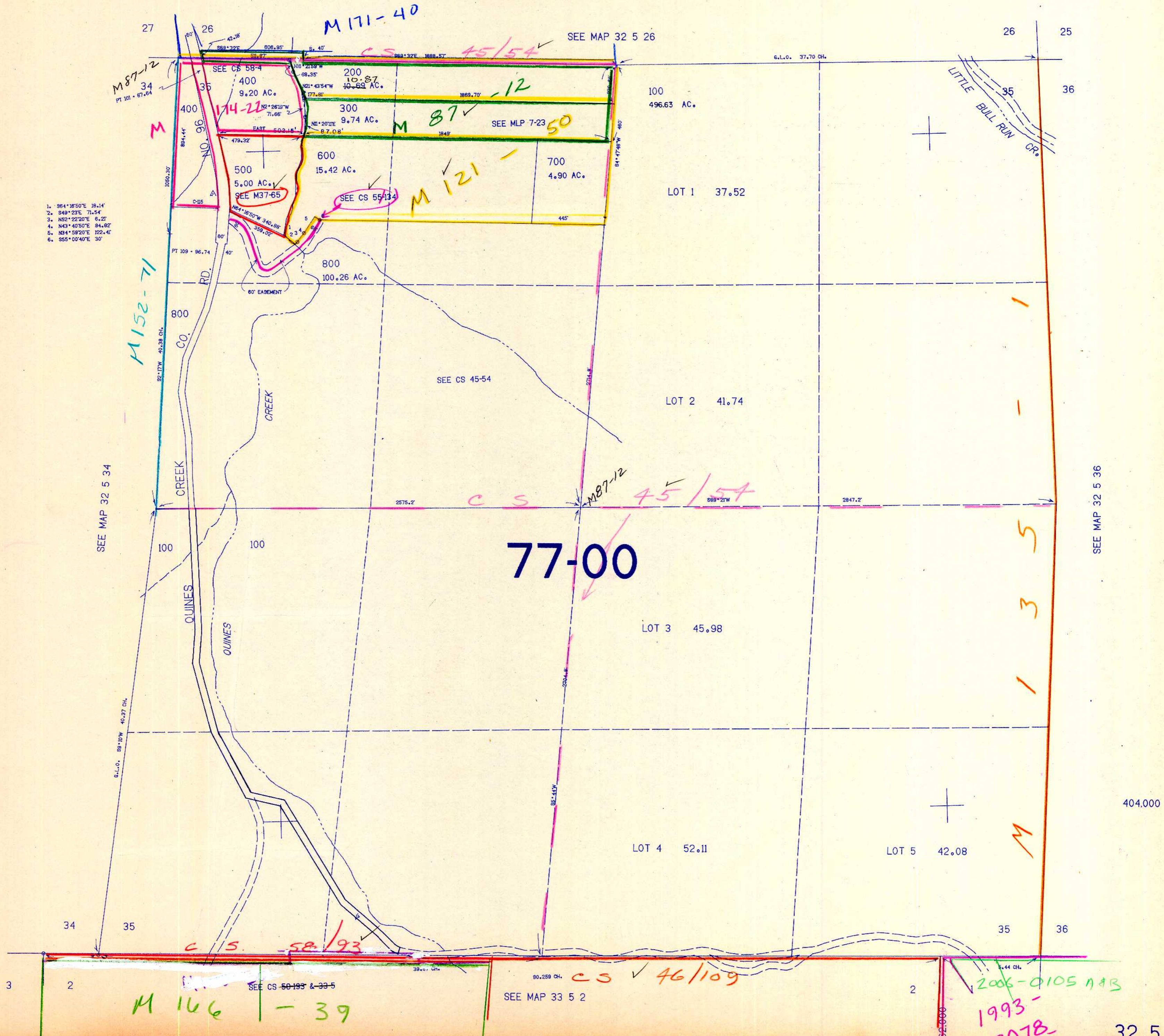
SECTION 35 T.32S. R.5W. W.M.
DOUGLAS COUNTY

REVISED ON
12-24-91

32 5 35

THIS MAP WAS PREPARED FOR
ASSESSMENT PURPOSE ONLY.

1"=400'



1. S64°16'50"E 18.14'
2. S49°23'E 71.54'
3. N52°22'20"E 6.21'
4. N43°49'50"E 84.82'
5. N34°53'20"E 122.41'
6. S55°00'40"E 30'

SEE MAP 32 5 36

SEE MAP 32 5 34

77-00

2006-0105 A+B
1993-
0078

32 5 35

1/92-28