

SECTION 32 T.32S. R.5W. W.M.
DOUGLAS COUNTY

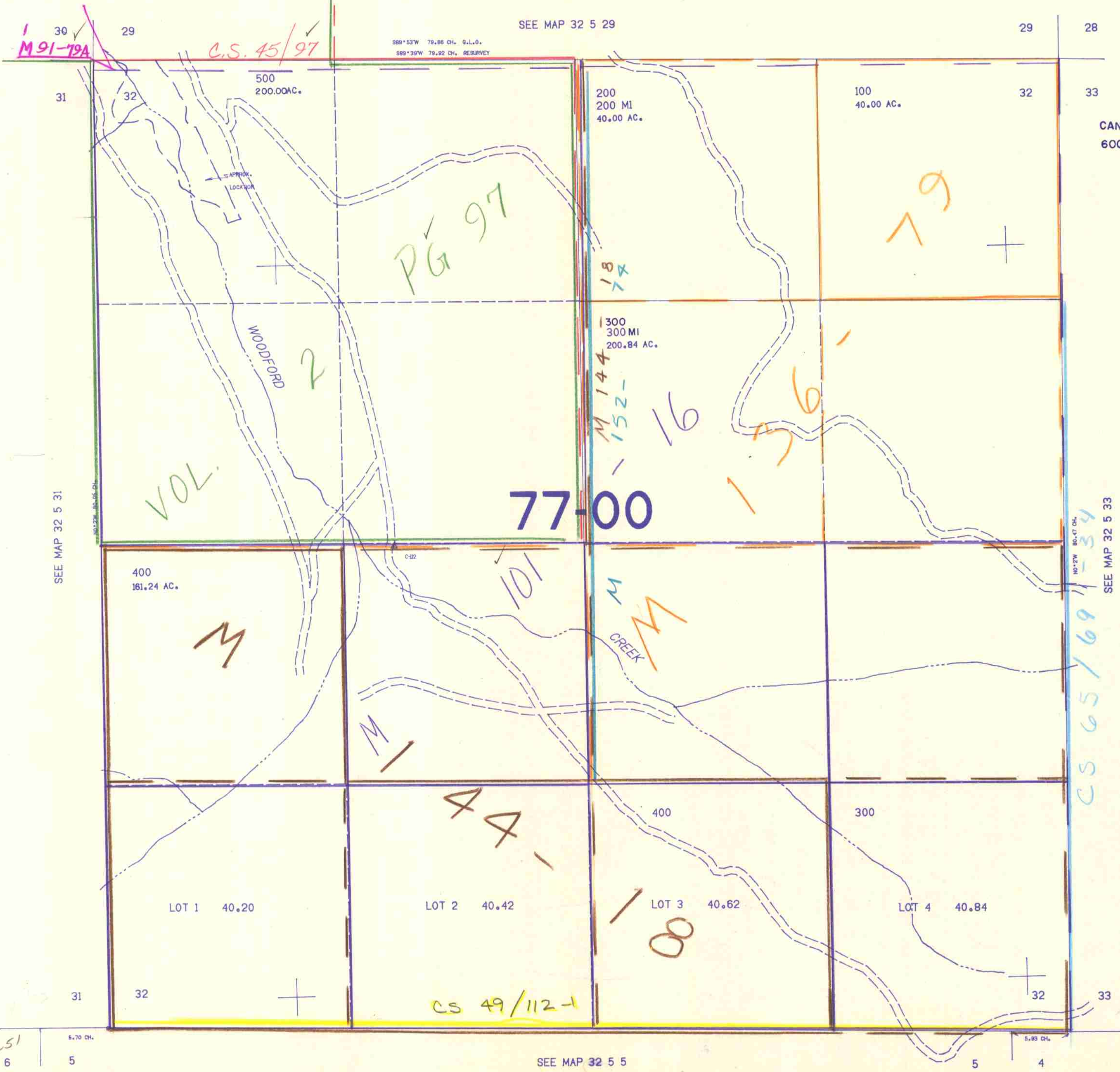
REVISED ON
5-2-91

32 5 32

THIS MAP WAS PREPARED FOR
ASSESSMENT PURPOSE ONLY.

1"=400'

SEE MAP 32 5 29



CANCELLED NO'S
600

SEE MAP 32 5 31

SEE MAP 32 5 33

SEE MAP 32 5 5

M 12-51
6

32 5 32
501
5100

1246.000

404.000