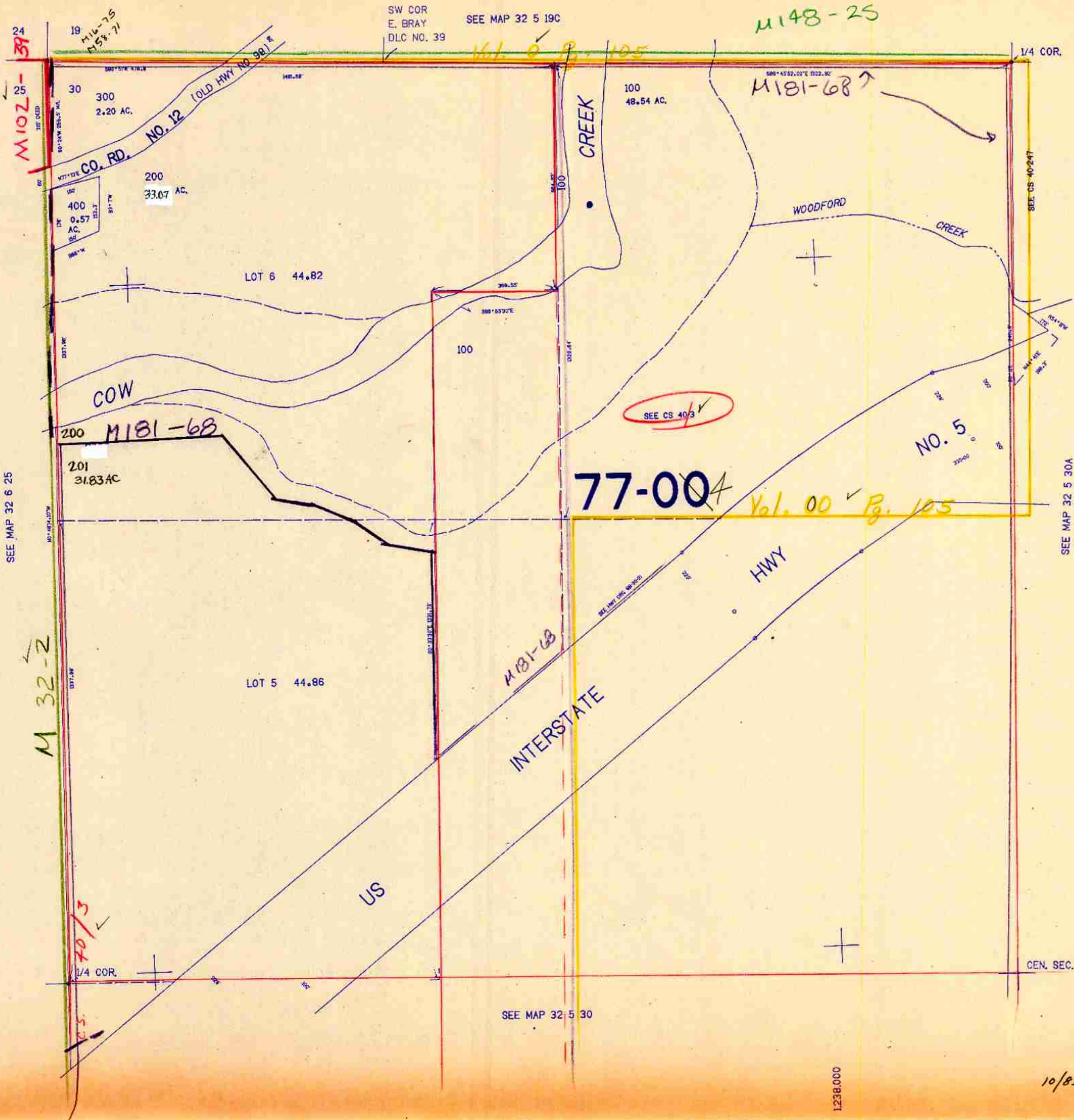


NW1/4 SEC. 30 T.32S. R.5W. W.M.
DOUGLAS COUNTY

32 5 30B

THIS MAP WAS PREPARED FOR
ASSESSMENT PURPOSE ONLY.

1"=200'



SEE MAP 32 6 25

SW COR
E. BRAY
DLC NO. 39
SEE MAP 32 5 19C

1/4 COR.

SEE CS 40-247

SEE MAP 32 5 30A

412.000

CEN. SEC.

SEE MAP 32 5 30

32 5 30B

10/83

1238.000