

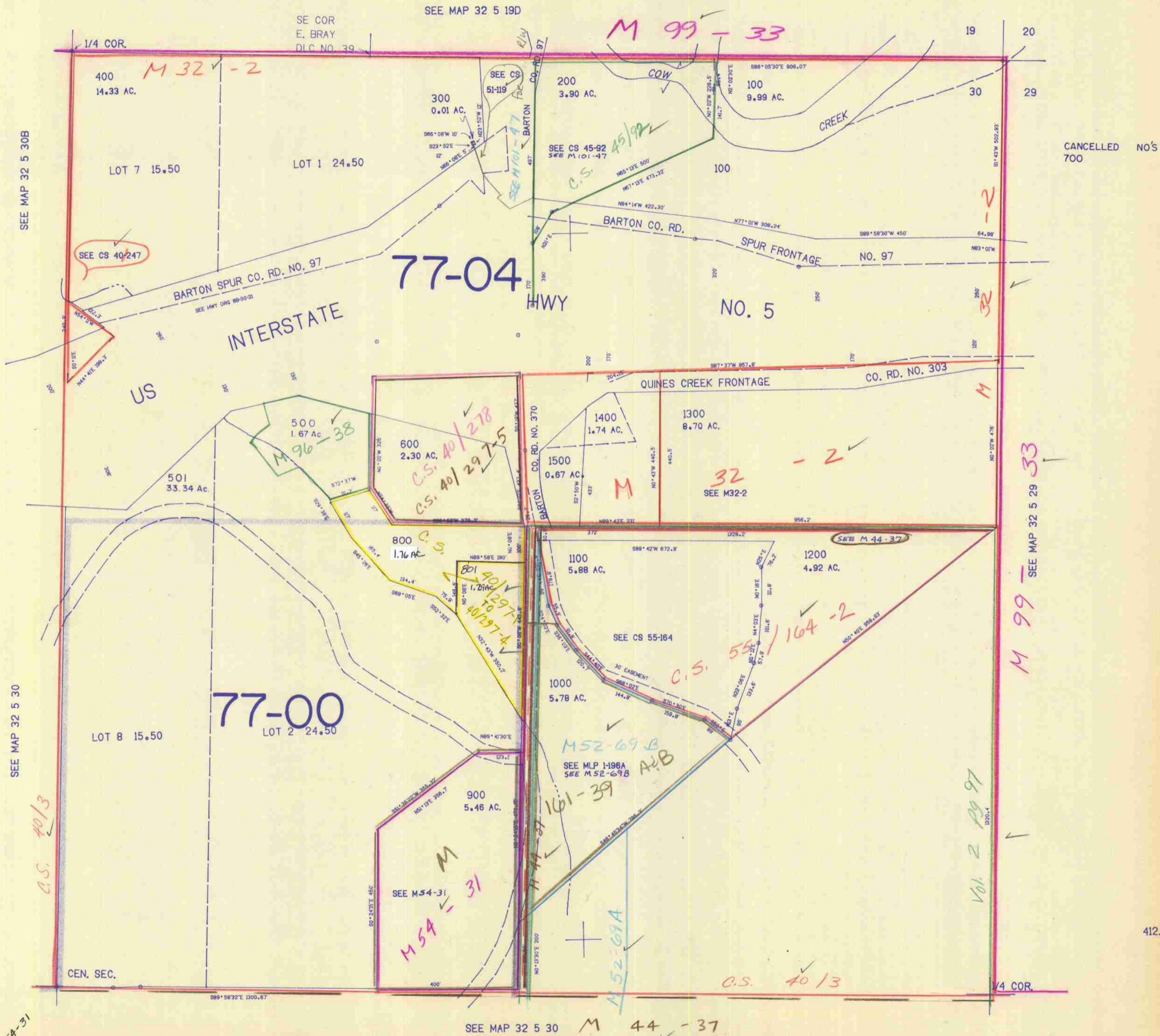
NE 1/4 SEC. 30 T. 32S. R. 5W. W.M.
DOUGLAS COUNTY

REVISED ON
1-4-93

32 5 30A

THIS MAP WAS PREPARED FOR
ASSESSMENT PURPOSE ONLY.

1"=200'



CANCELLED NO'S
700

412.000

32 5 30A

119300 JP