

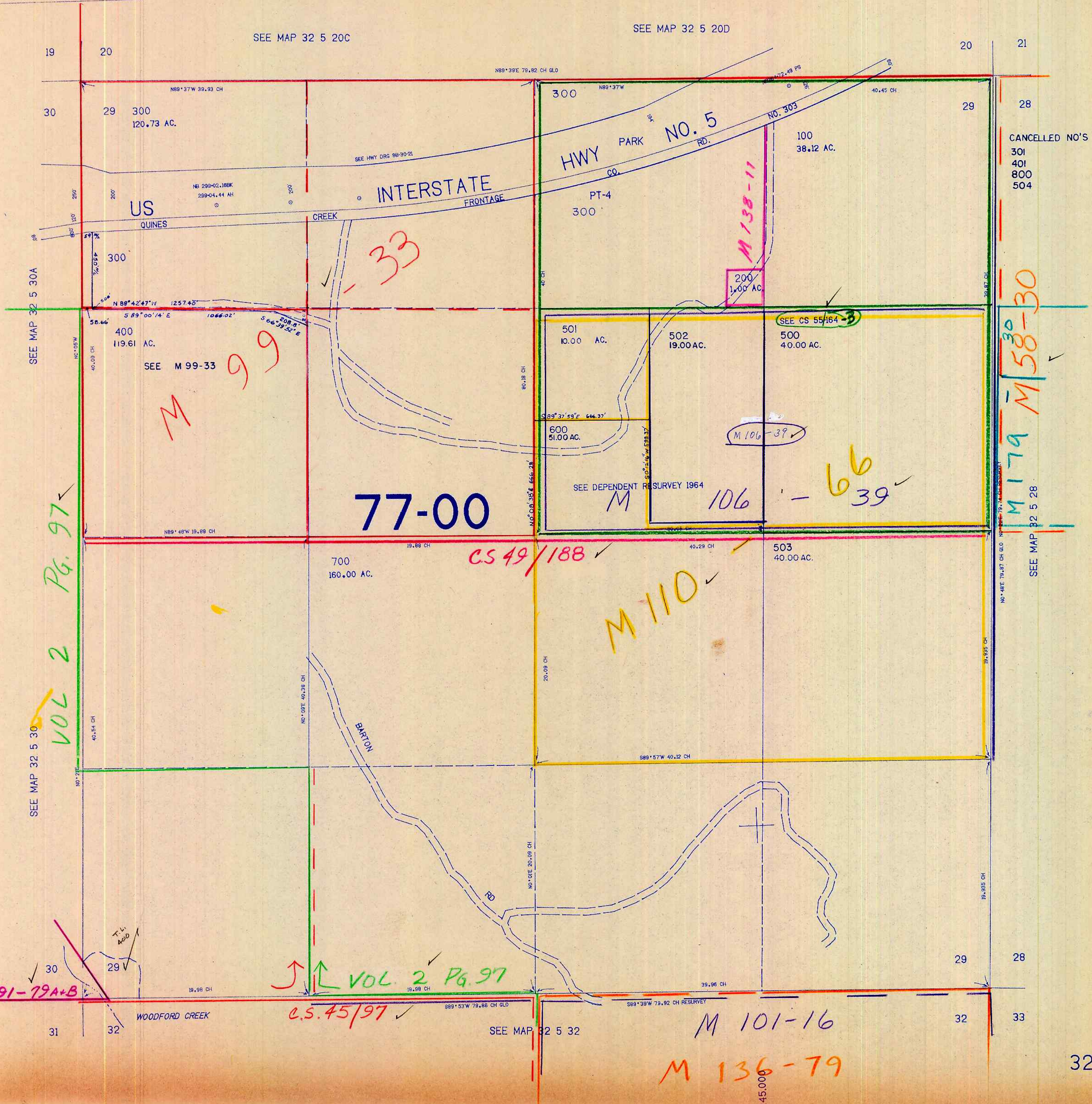
SECTION 29 T.32S. R.5W. W.M.
DOUGLAS COUNTY

REVISED ON
8-26-91

32 5 29

THIS MAP WAS PREPARED FOR
ASSESSMENT PURPOSE ONLY.

1"=400'



M 32-2

SEE MAP 32 5 30A

SEE MAP 32 5 30

VOL 2 Pg. 97

M 99-33

77-00

CS 49/188

M 110

M 106-39

106 - 66 39

M 179 M 58-30

M 91-79A+B

VOL 2 Pg. 97

CS 45/97

M 101-16

M 136-79

CANCELED NO'S
301
401
800
504

32 5 29

410.000