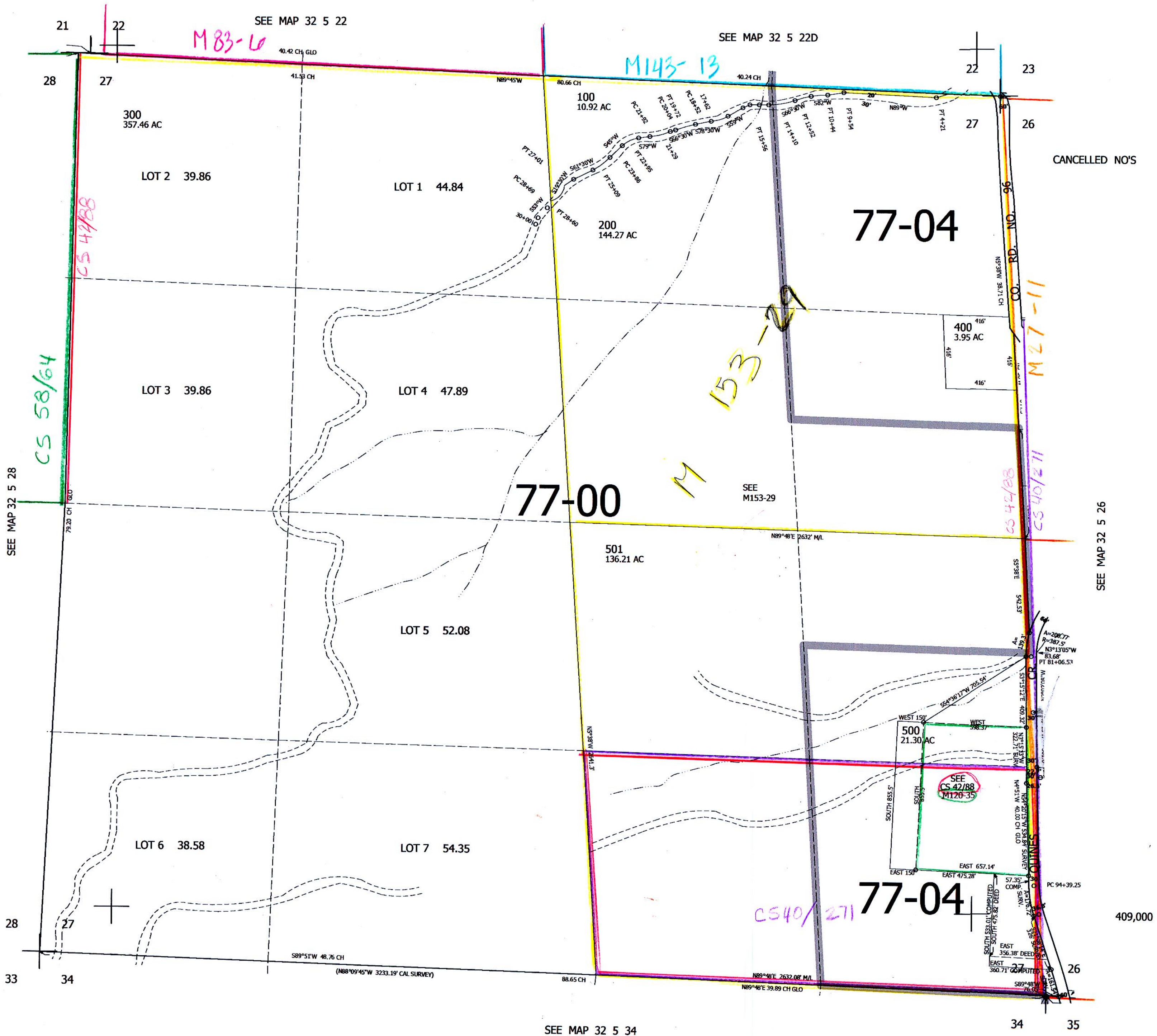


THIS MAP WAS PREPARED FOR ASSESSMENT PURPOSE ONLY.

SEC.27 T.32S. R.5W. W.M. DOUGLAS COUNTY 1" = 400'

REVISED ON 8-8-18

32 5 27



CANCELLED NO'S

SEE MAP 32 5 26

409,000

32 5 27

8-9-18
JC