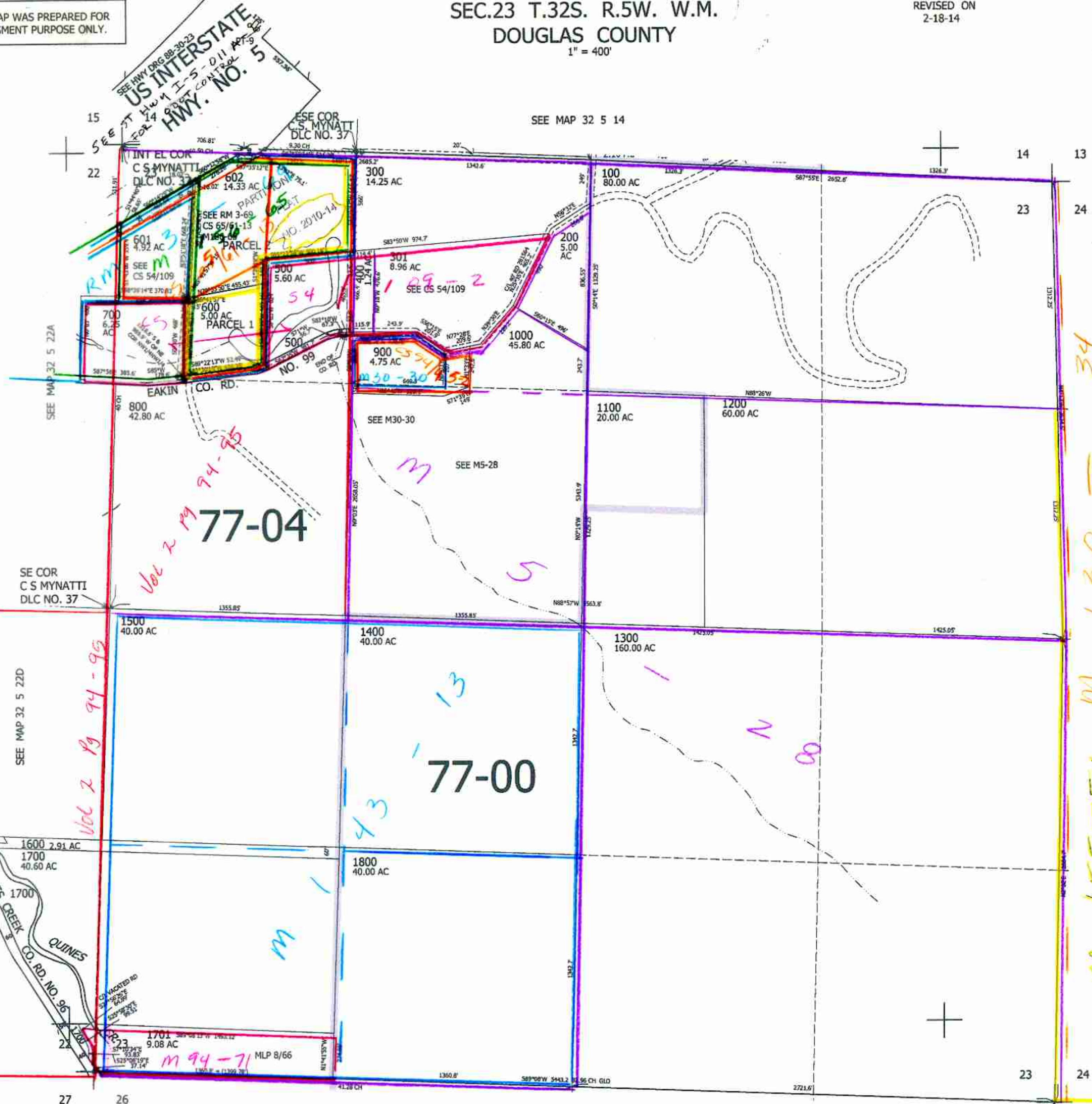


THIS MAP WAS PREPARED FOR ASSESSMENT PURPOSE ONLY.

SEC.23 T.32S. R.5W. W.M.
DOUGLAS COUNTY
1" = 400'

REVISED ON
2-18-14

32 5 23



CANCELLED NO'S
1901 1900

SEE MAP 32 5 24

SEE MAP 32 5 26

4,183,000

32 5 23
M 5/20/10

414,000