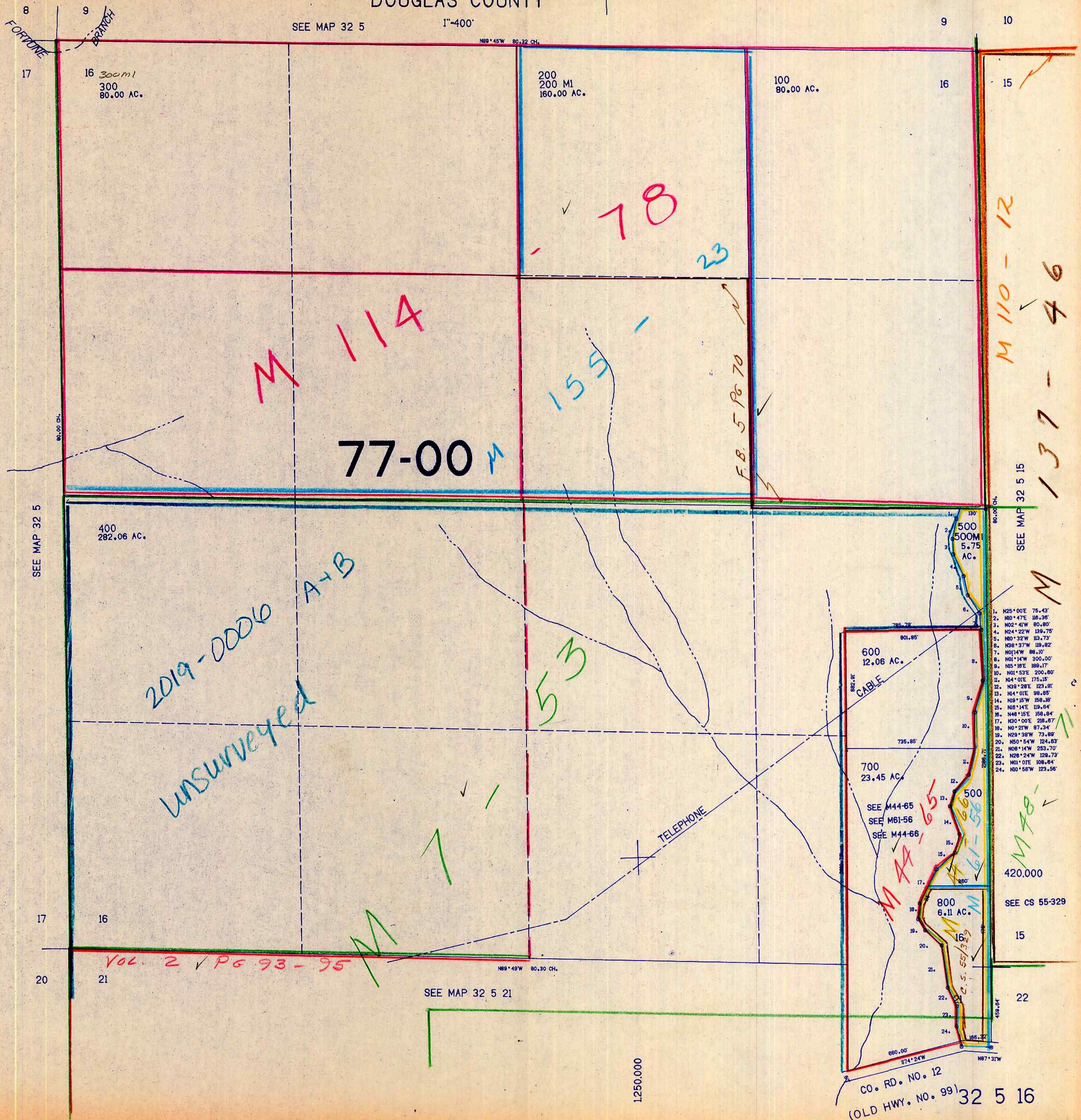


SECTION 16 T.32S. R.5W. W.M.  
DOUGLAS COUNTY

32 5 16

THIS MAP WAS PREPARED FOR  
ASSESSMENT PURPOSE ONLY.



8  
17  
FORTUNE

9  
BRANCH

SEE MAP 32 5 1"=400'

9 10

16  
300 MI  
300  
80.00 AC.

200  
200 MI  
160.00 AC.

100  
80.00 AC.

16 15

77-00 M

SEE MAP 32 5

400  
282.06 AC.

2019-0006 A+B  
Unsurveyed

53

TELEPHONE

600  
12.06 AC.

700  
23.45 AC.

800  
6.11 AC.

500  
500M  
5.75  
AC.

1. N25°00'E 75.43'
2. N0°47'E 18.36'
3. N02°41'W 80.80'
4. N04°22'W 139.75'
5. N0°32'W 113.73'
6. N38°37'W 119.82'
7. N01°14'W 89.10'
8. N01°14'W 300.00'
9. N5°18'E 189.17'
10. N01°53'E 200.80'
11. N4°01'E 175.15'
12. N38°28'E 123.91'
13. N4°01'E 98.05'
14. N8°15'W 158.18'
15. N0°14'E 119.84'
16. N48°15'E 158.84'
17. N30°00'E 218.87'
18. N0°21'W 87.34'
19. N28°38'W 73.89'
20. N50°54'W 124.83'
21. N08°14'W 253.70'
22. N28°24'W 128.73'
23. N01°01'E 108.84'
24. N0°56'W 123.56'

420.000  
SEE CS 55-329

17 16

20 21

SEE MAP 32 5 21

15

22

1:250,000

CO. RD. NO. 12  
(OLD HWY. NO. 99) 32 5 16

Handwritten initials/signature