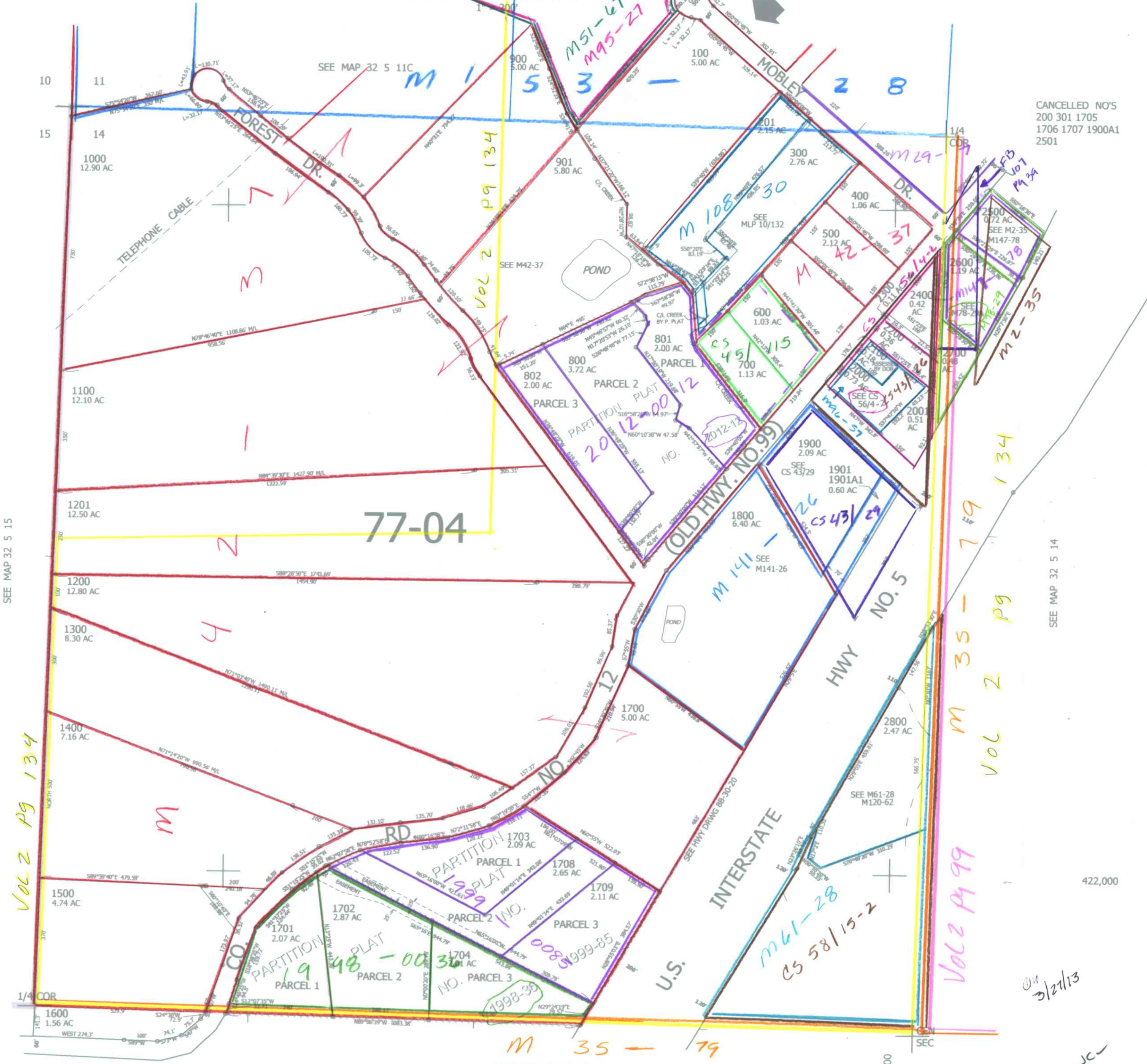


THIS MAP WAS PREPARED FOR ASSESSMENT PURPOSE ONLY.

NW1/4 SEC.14 T.32S. R.5W. W.M. DOUGLAS COUNTY

REVISED ON 1-30-13

32 5 14B



CANCELLED NO'S
200 301 1705
1706 1707 1900A1
2501

SEE MAP 32 5 15

SEE MAP 32 5 14

422,000

on 3/21/13

scw

SEE MAP 32 5 14

4,181,000

32 5 14B