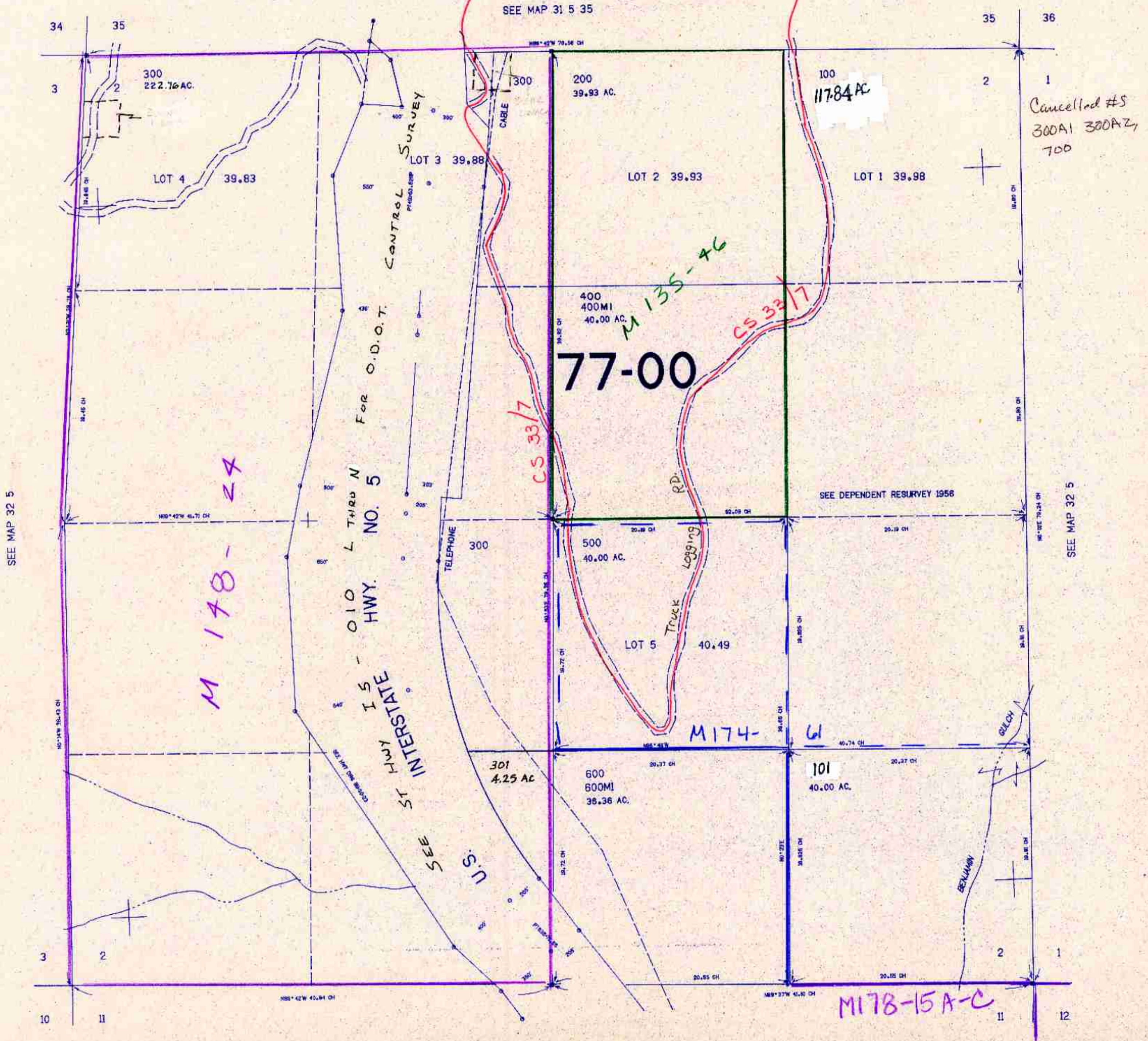


SECTION 2 T.32S. R.5W. W.M.  
DOUGLAS COUNTY

32 5 2

THIS MAP WAS PREPARED FOR  
ASSESSMENT PURPOSE ONLY.

1"=400'



SEE MAP 32 5

SEE MAP 32 5

SEE MAP 32 5 II

32 5 2

263,000

SC 9/99

M. 4