

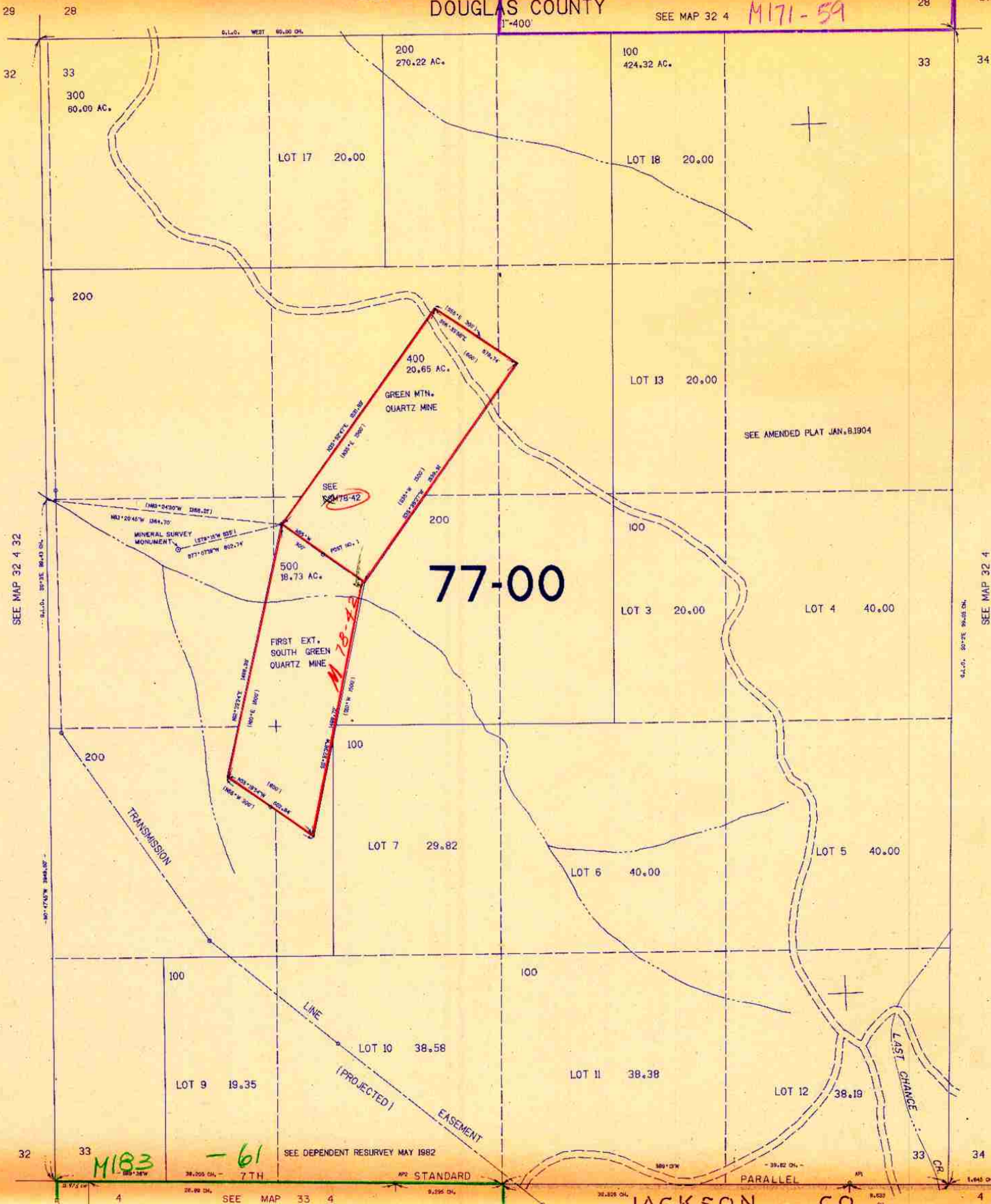
SECTION 33 T.32S. R.4W. W.M.  
DOUGLAS COUNTY

SEE MAP 32 4

M171-59

32 4 33

THIS MAP WAS PREPARED FOR  
ASSESSMENT PURPOSE ONLY.



SEE MAP 32 4 32

SEE MAP 32 4

77-00

M 78-42

M183

-61

SEE DEPENDENT RESURVEY MAY 1982

AP2 STANDARD

PARALLEL

JACKSON

CO.

SOUTH

32 4 33

7/84 BS

1277,000