

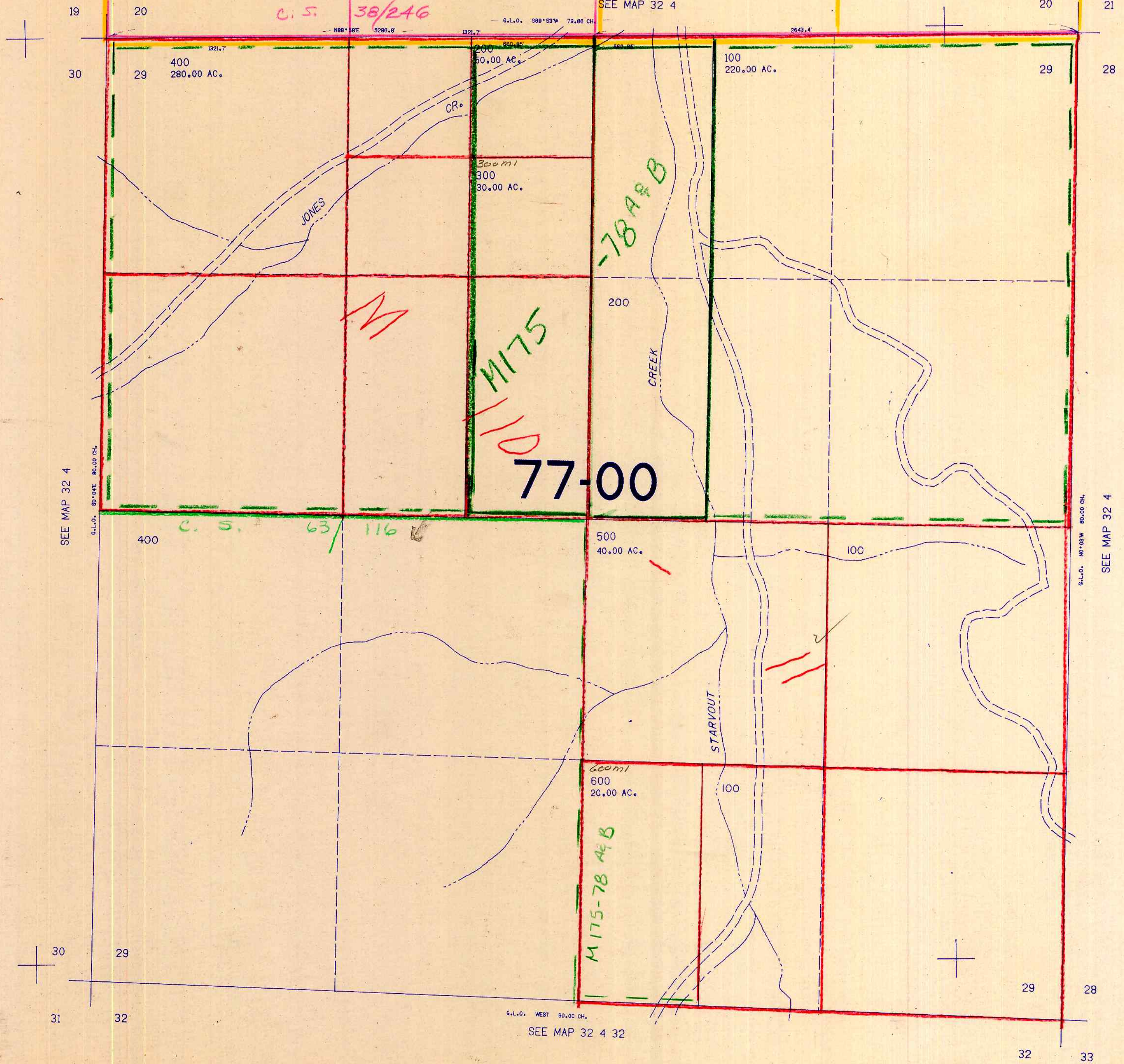
SECTION 29 T.32S. R.4W. W.M.
DOUGLAS COUNTY

32 4 29

THIS MAP WAS PREPARED FOR
ASSESSMENT PURPOSE ONLY.

1"=400'

M 1 46-16



SEE MAP 32 4

SEE MAP 32 4

SEE MAP 32 4 32

409.000

1.277,000

32 4 29

7/84 BS