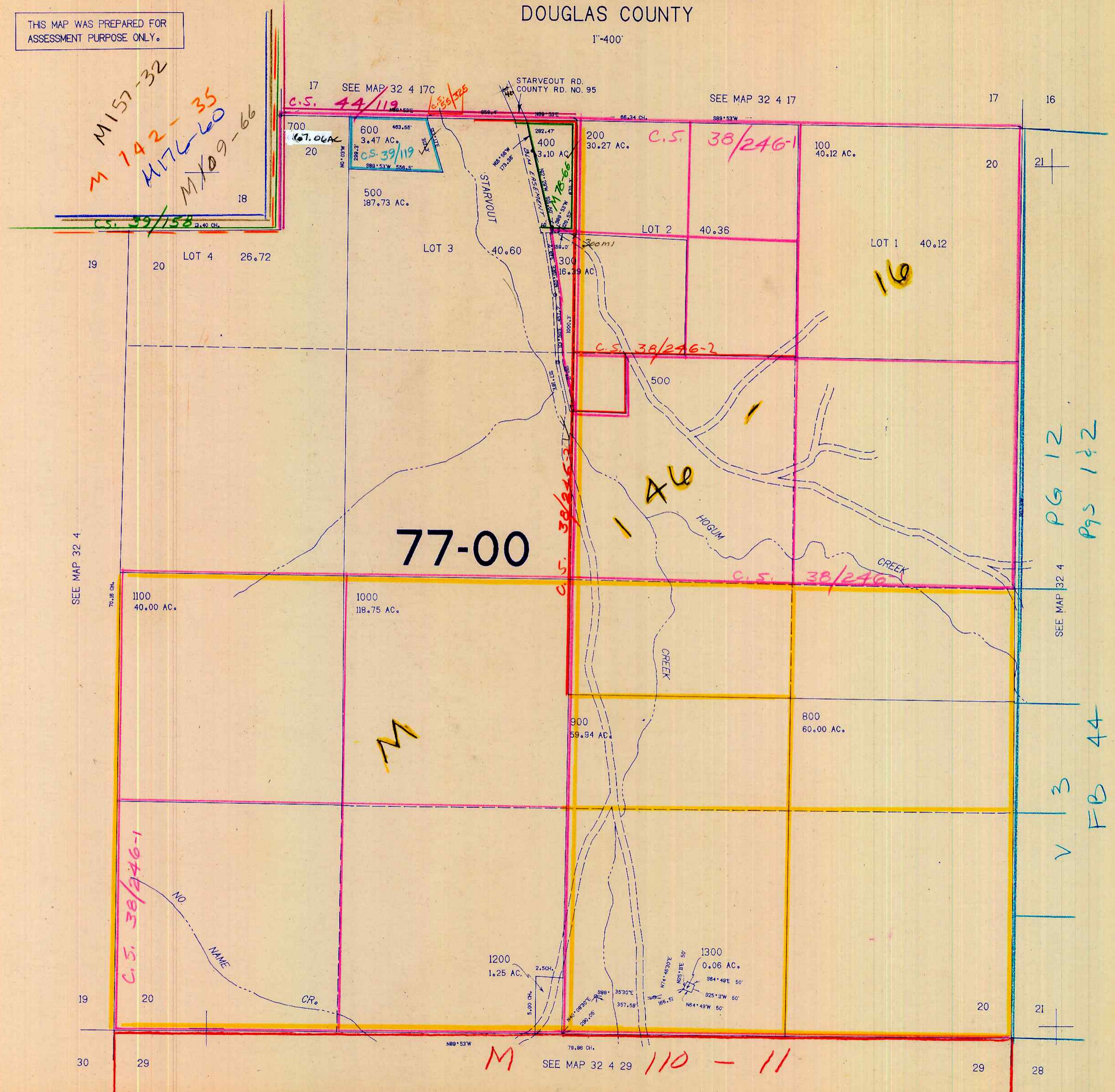


SECTION 20 T.32S. R.4W. W.M.
DOUGLAS COUNTY

THIS MAP WAS PREPARED FOR
ASSESSMENT PURPOSE ONLY.

1"=400'



M157-32
M176-60
M109-66

77-00

M

146

16

C.S. 38/246-1

M 110-11

PG 12
PGS 1 & 2

V 3
FB 44

1.273.000