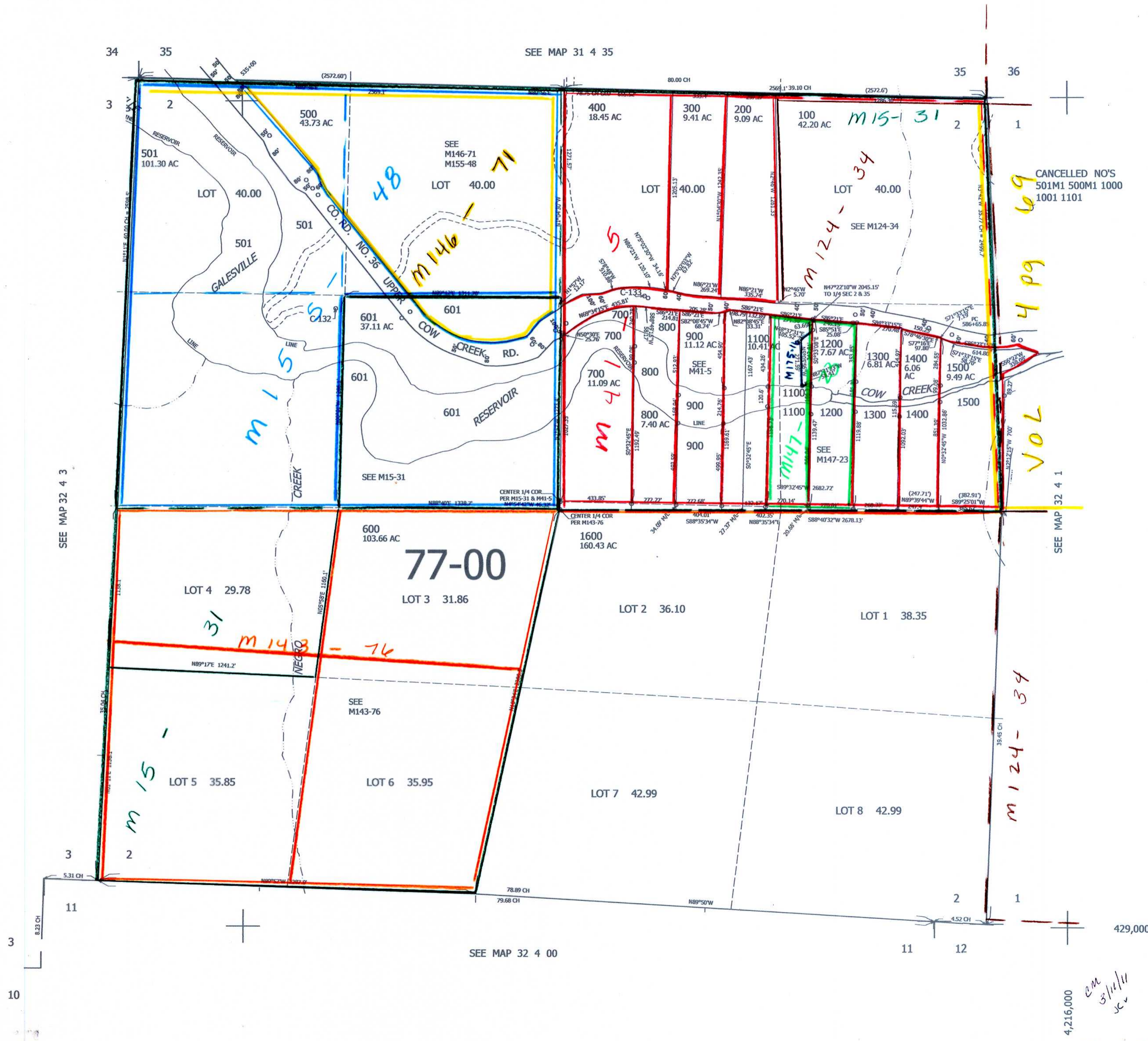


THIS MAP WAS PREPARED FOR ASSESSMENT PURPOSE ONLY.

SEC.2 T.32S. R.4W. W.M.
DOUGLAS COUNTY
1" = 400'

REVISED ON
1-14-19

32 4 2



CANCELLED NO'S
501M1 500M1 1000
1001 1101

4,216,000
EM
3/11/11
JC

32 4 2