

THIS MAP WAS PREPARED FOR ASSESSMENT PURPOSE ONLY.

# SEC.28 T.32S. R.3W. W.M. DOUGLAS COUNTY

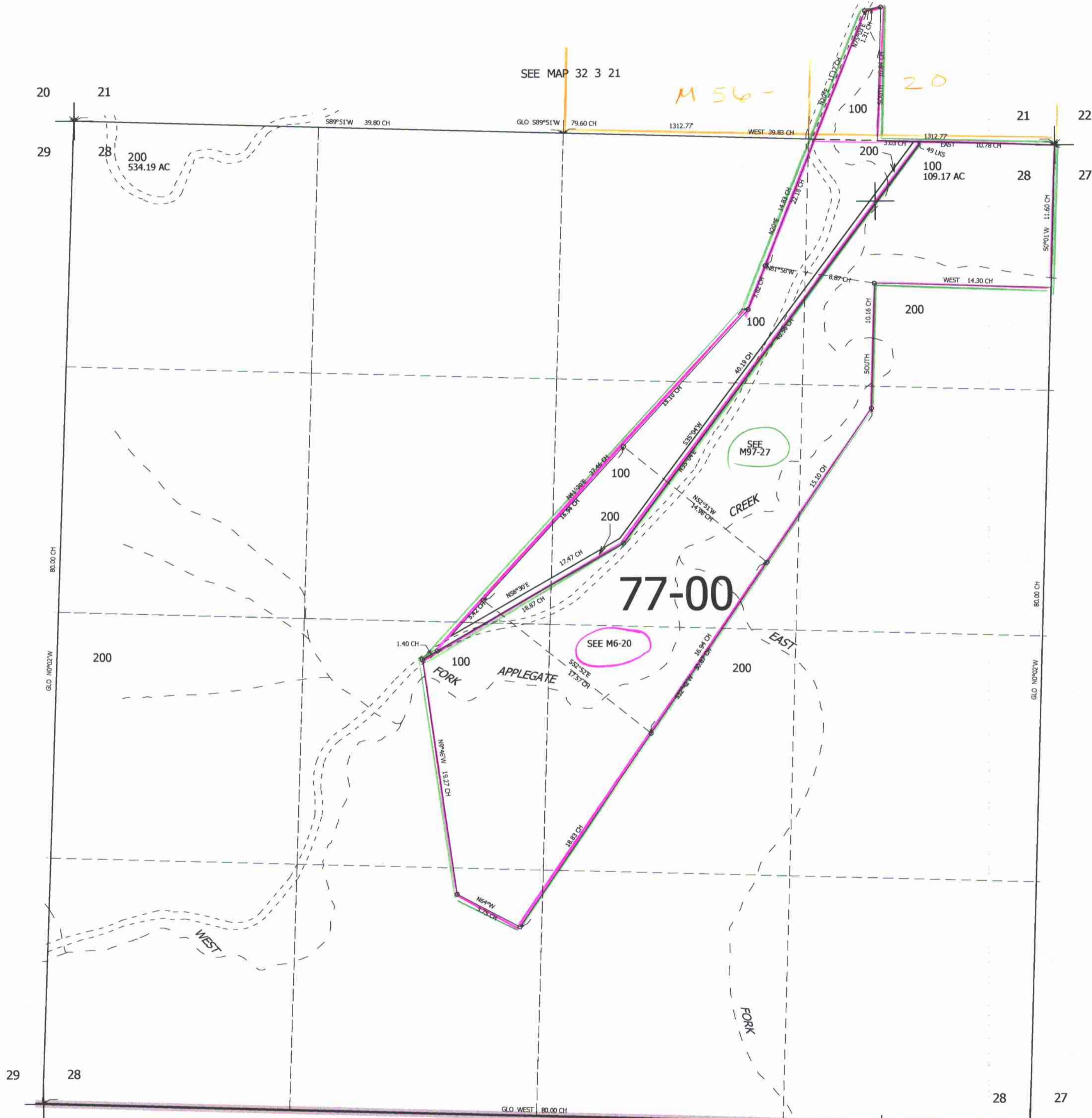
REVISED ON 5-2-06

32 3 28

1" = 400'

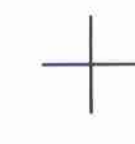


SEE MAP 32 3 00



CANCELLED NO'S

SEE MAP 32 3 00



JACKSON COUNTY

4,236,000

406,000

32 3 28

5/2006