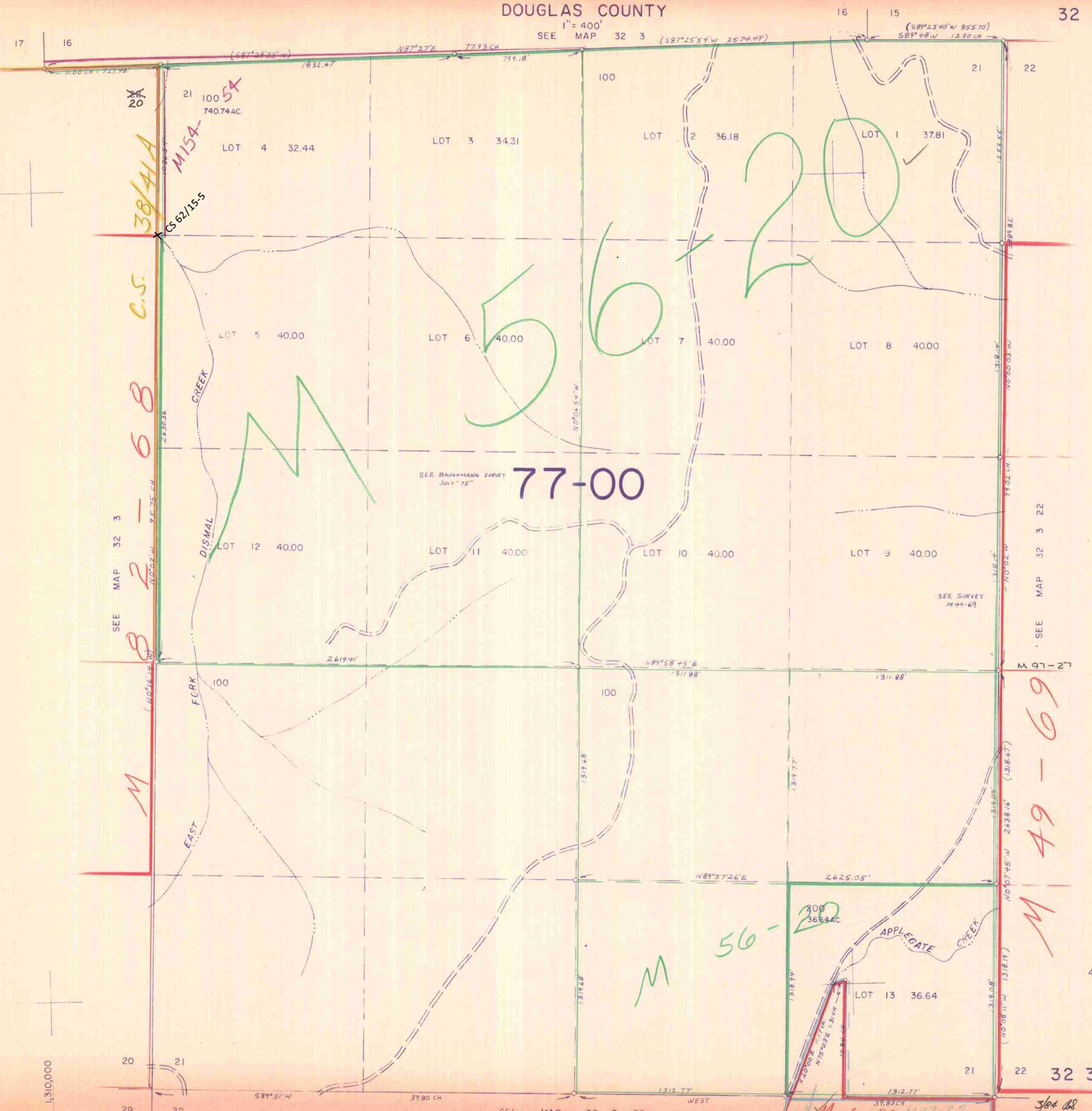


SECTION 21 T.32S. R. 3 W. W.M.  
DOUGLAS COUNTY

32 3 21

1" = 400'  
SEE MAP 32 3



38/41A

C.S.

68

2-68

8

M

77-00

50-20

M

M 49-69

M

M 6-20 M 77-27

3/64 88

1,310,000

412,000

32 3 21