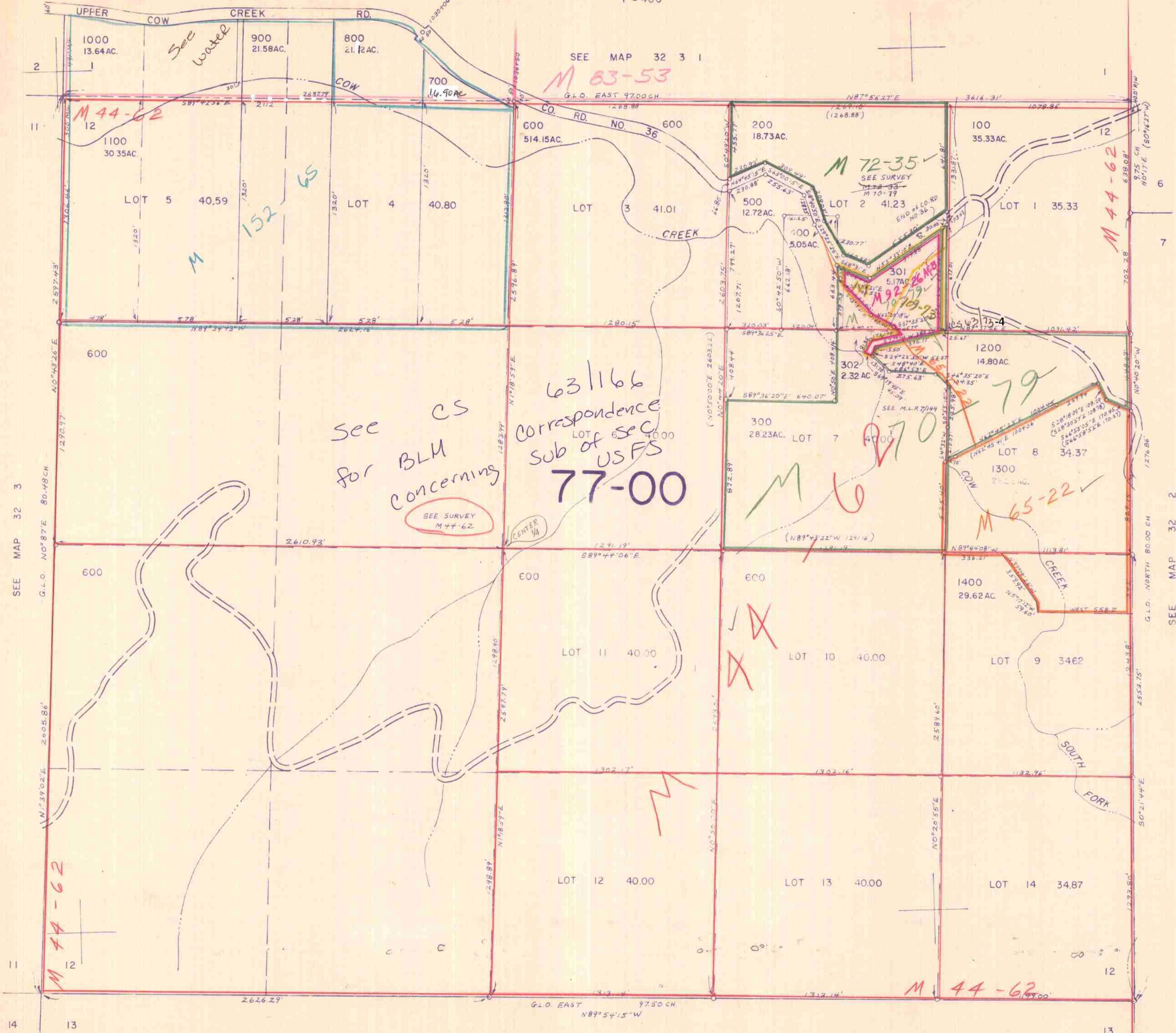


SECTION 12 T.32S. R. 3 W. W.M.
DOUGLAS COUNTY

32 3 12

1" = 400'



*c.s. 52/76
Rights*

See water

SEE MAP 32 3 1
M 83-53

M 44-62

M 72-35
SEE SURVEY
M 72-35
M 70-79

M 44-62

*See CS
for BLM
concerning*

*631166
Correspondence
Sub of sec
USFS
77-00*

SEE SURVEY
M 44-62

M 6

M 65-22

M 70

SEE MAP 32 3

SEE MAP 32 2

M 44-62

M 44-62

SEE MAP 32 3

32 3 12

3/8/88

18