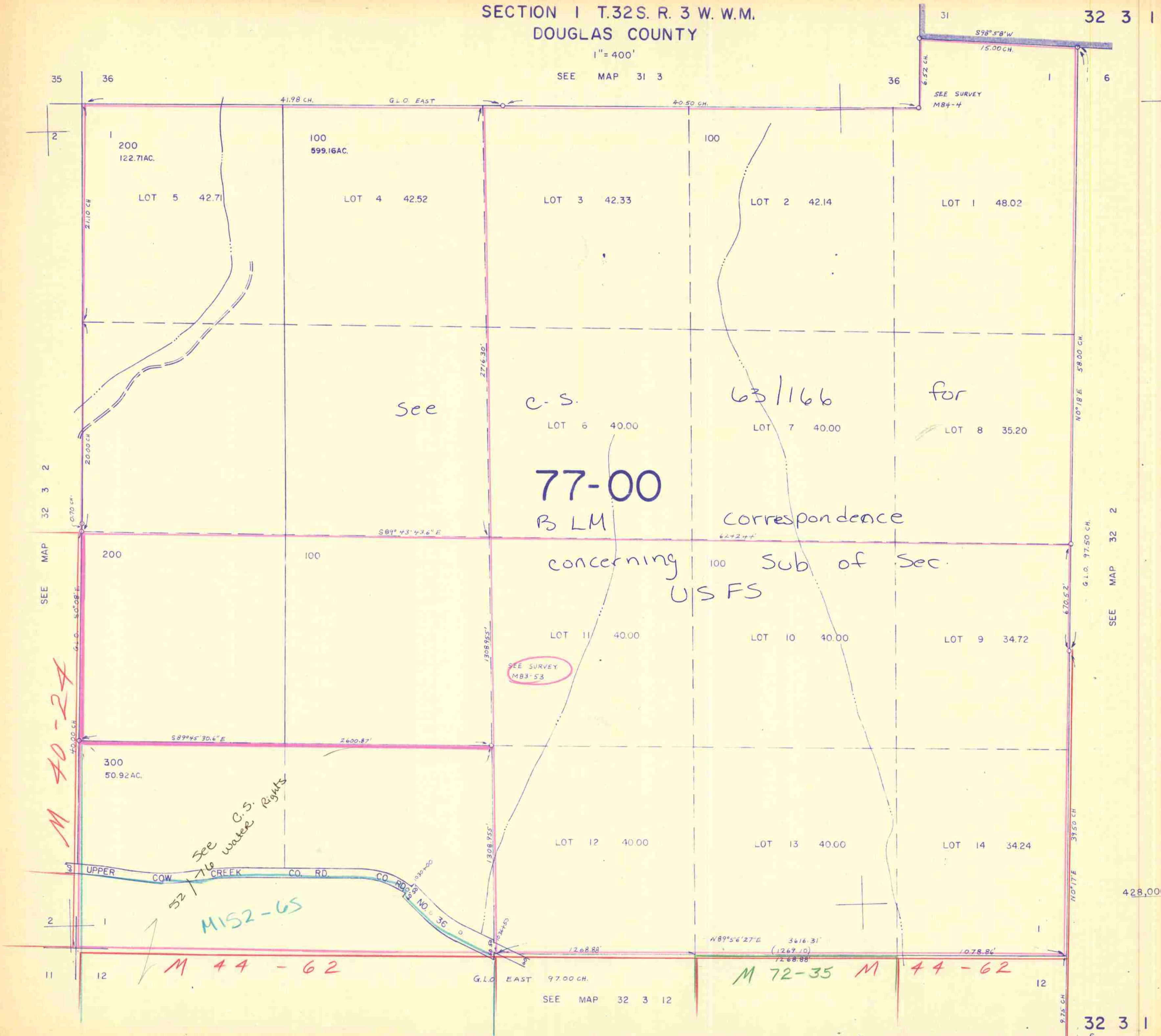


SECTION 1 T.32S. R. 3 W. W.M.
DOUGLAS COUNTY

1" = 400'

SEE MAP 31 3



See

c.s.

63/166

for

77-00

B LM

Correspondence

concerning 100 Sub of Sec.
USFS

SEE SURVEY
M83-53

M 40-24

see C.S. water Rights

MIS2-65

M 44-62

M 72-35 M 44-62

1,331,000

3/84 BS

428,000

32 3 1