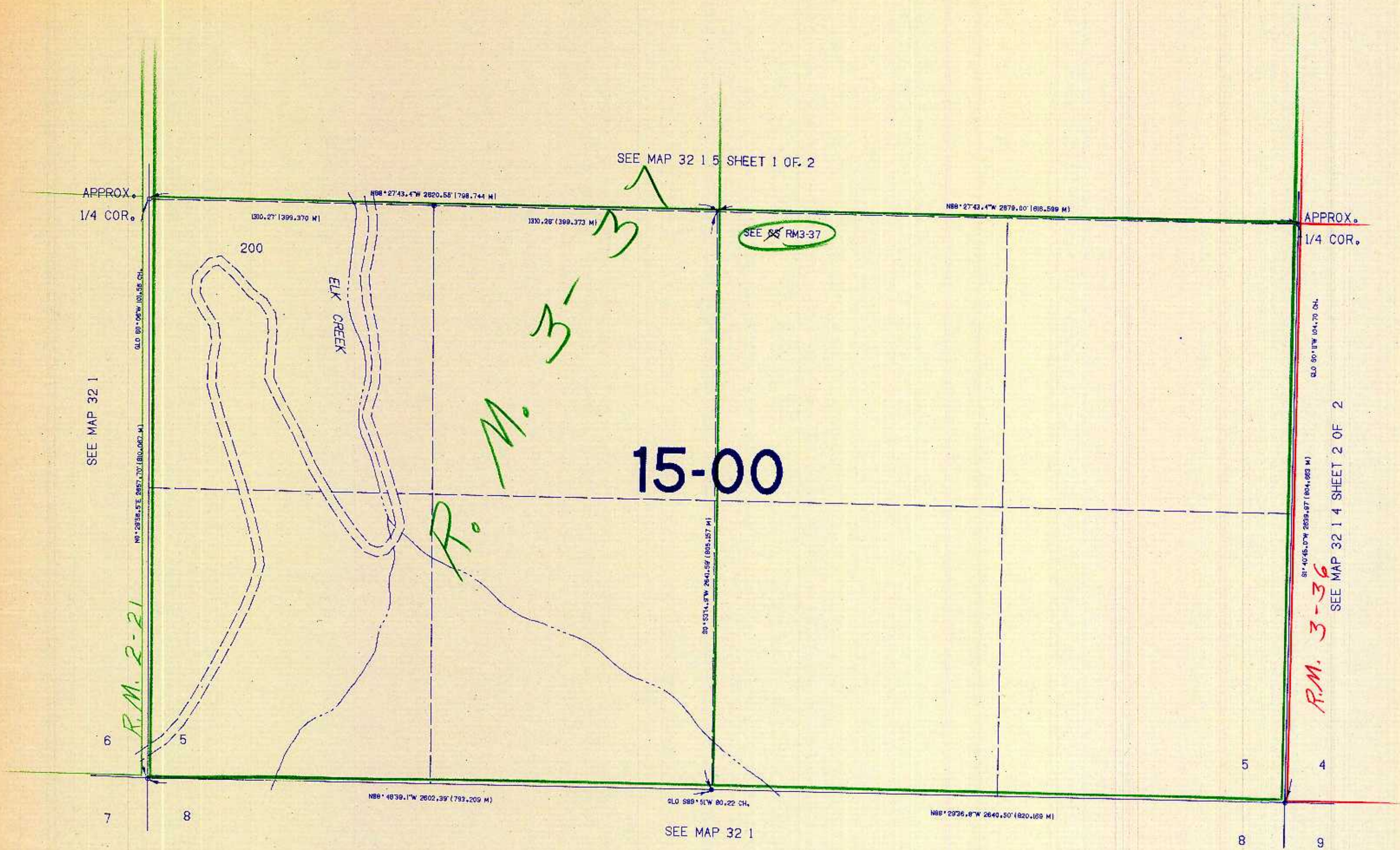


THIS MAP WAS PREPARED FOR
ASSESSMENT PURPOSE ONLY.

SECTION 5 T.32S. R.1W. W.M.
DOUGLAS COUNTY

1"=400'

32 1 5
SHEET 2 OF 2



425,000

SOUTH PORTION 32 1 5
SHEET 2 OF 2

74,000

2/84 BR