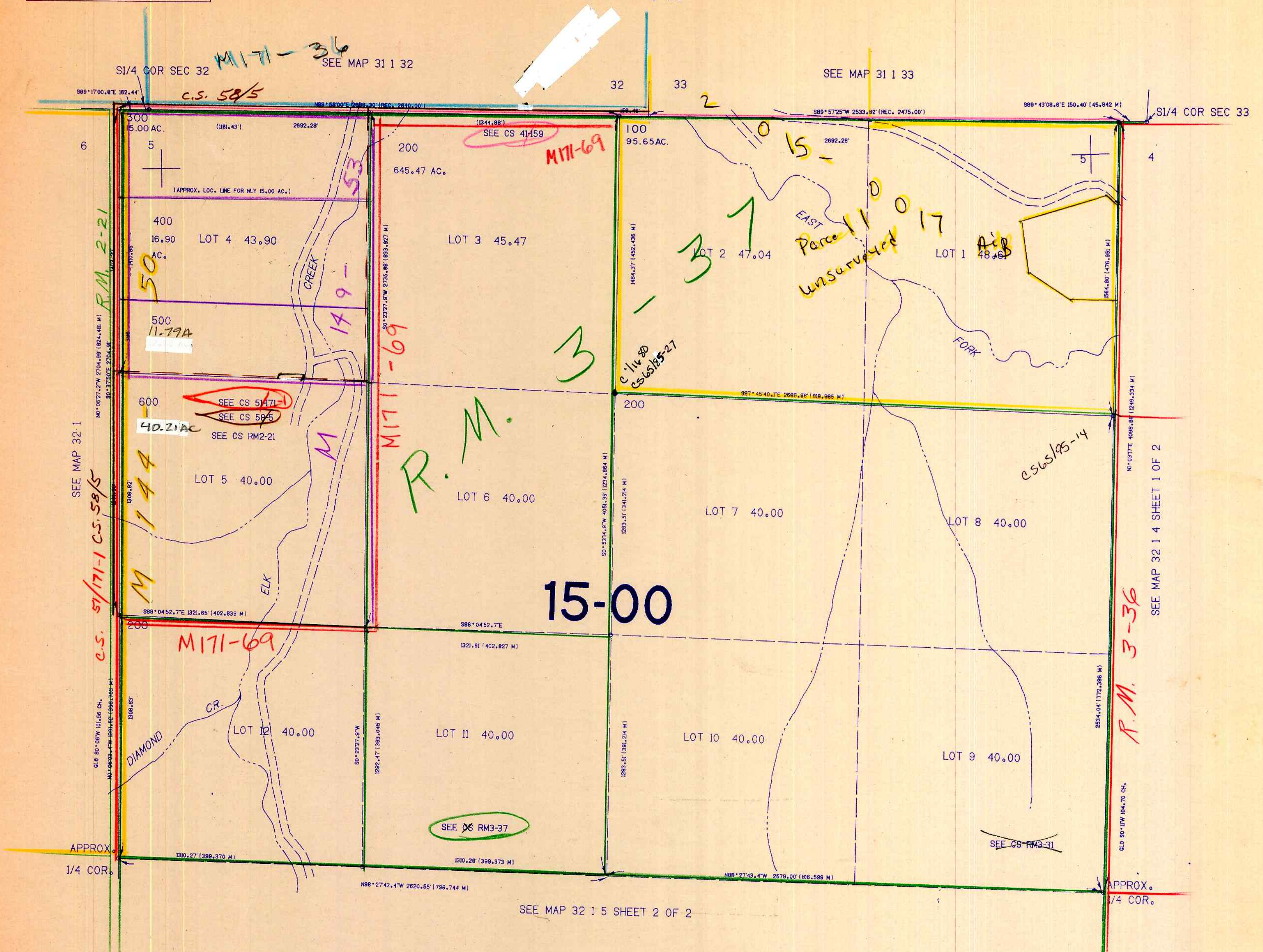


SECTION 5 T.32S. R.1W. W.M.
DOUGLAS COUNTY

THIS MAP WAS PREPARED FOR
ASSESSMENT PURPOSE ONLY.

1"=400'



SEE MAP 32 1

R.M. 2-21

SEE MAP 32 1

C.S. 51/171-1 C.S. 58/5

SEE MAP 32 1

APPROX. 1/4 COR.

APPROX. 1/4 COR.

SEE MAP 32 1 5 SHEET 2 OF 2

SEE MAP 32 1 4 SHEET 1 OF 2

R.M. 3-36

SEE MAP 32 1 4 SHEET 1 OF 2

APPROX. 1/4 COR.

427.000

2/84 BJ