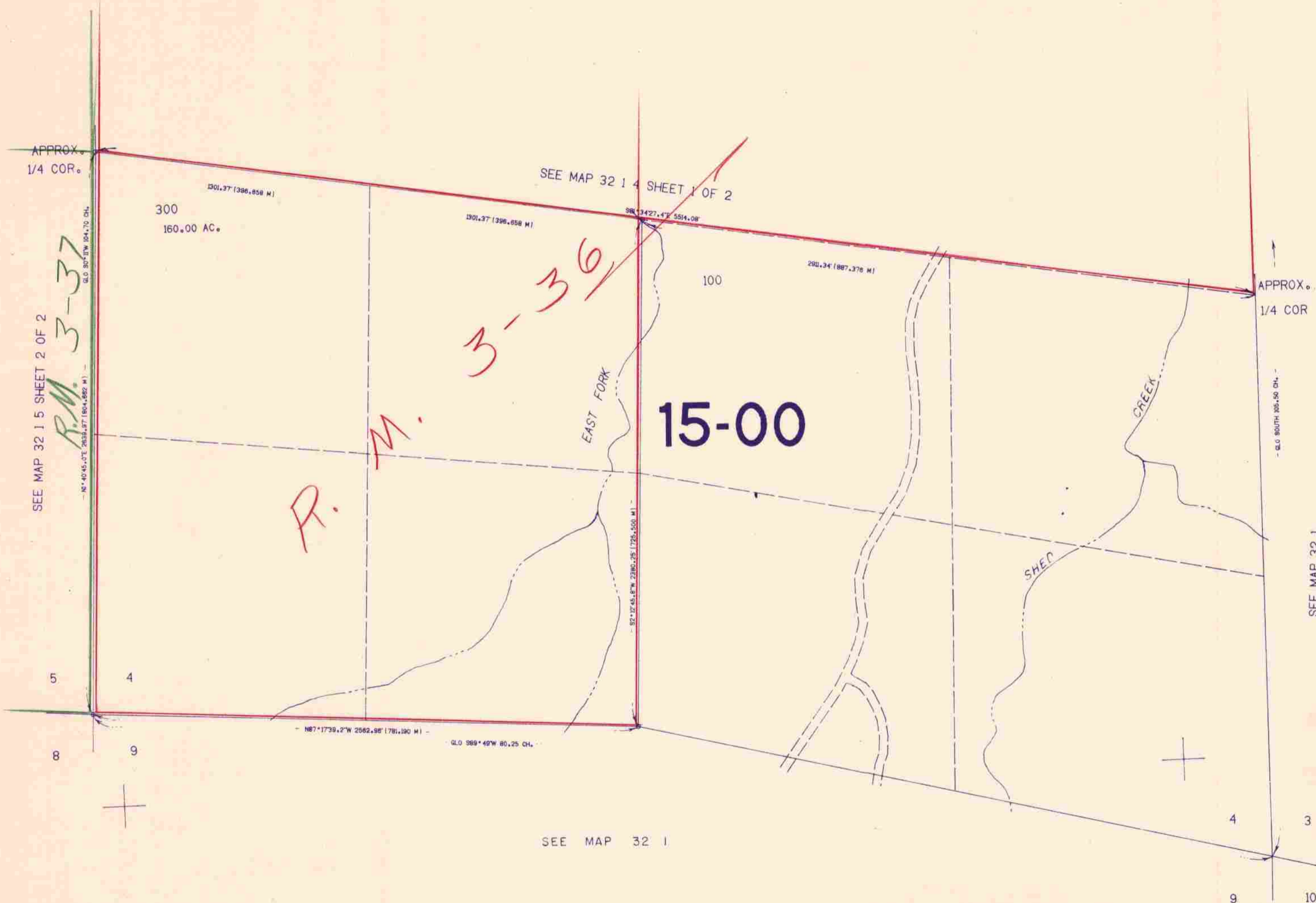


SECTION 4 T.32S. R.1W. W.M.
DOUGLAS COUNTY

32 1 4
SHEET 2 OF 2

THIS MAP WAS PREPARED FOR
ASSESSMENT PURPOSE ONLY.

1"=400'



SOUTH PORTION 32 1 4
SHEET 2 OF 2
2/84 68