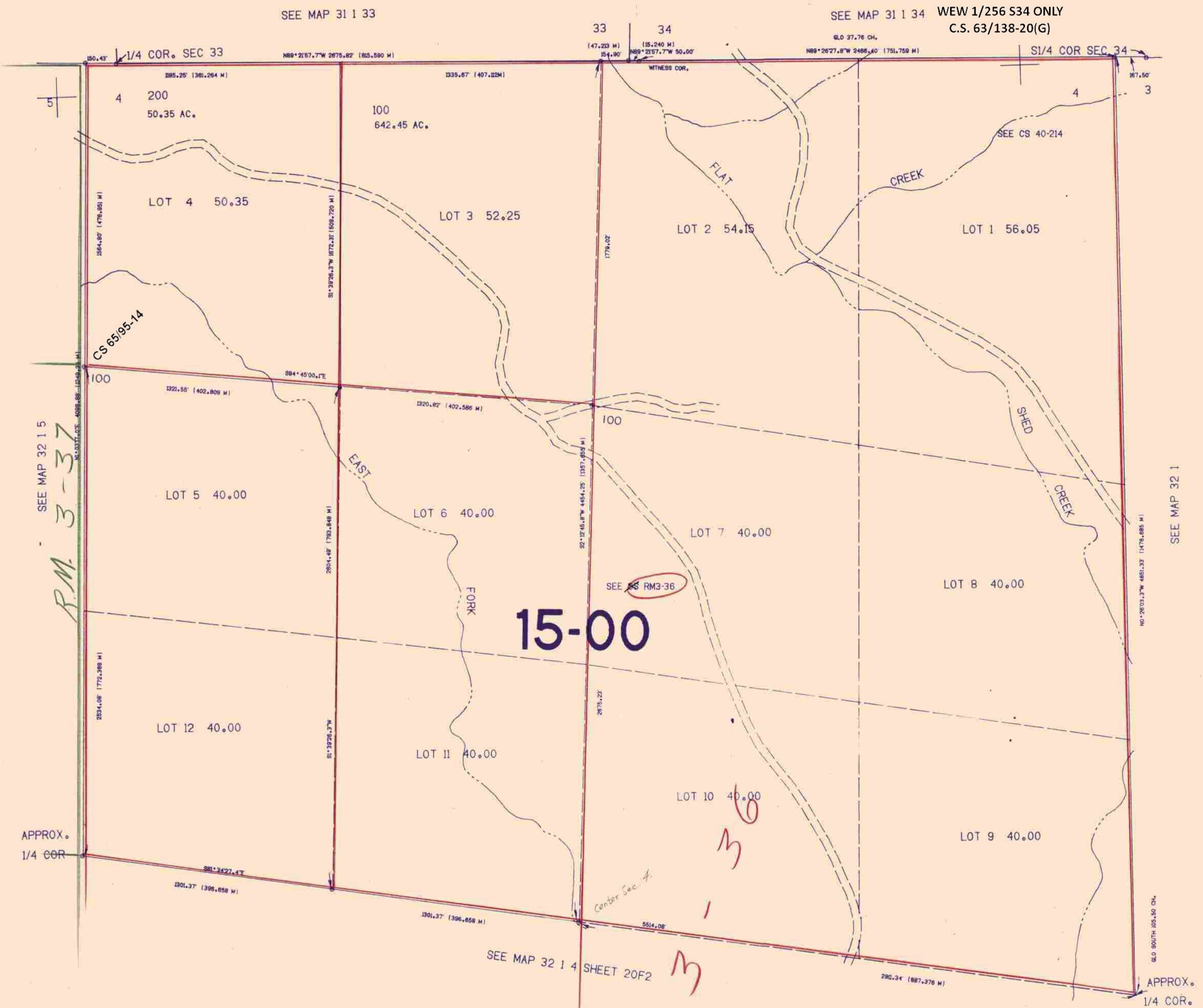


SECTION 4 T.32S. R.1W. W.M.
DOUGLAS COUNTY

THIS MAP WAS PREPARED FOR
ASSESSMENT PURPOSE ONLY.

1"=400'



SEE MAP 32 1 5
R.M. 3-37

15-00

SEE RM3-36

60
3
1

R.M.

2/84 BS

427.000

379.000