

THIS MAP WAS PREPARED FOR ASSESSMENT PURPOSE ONLY.

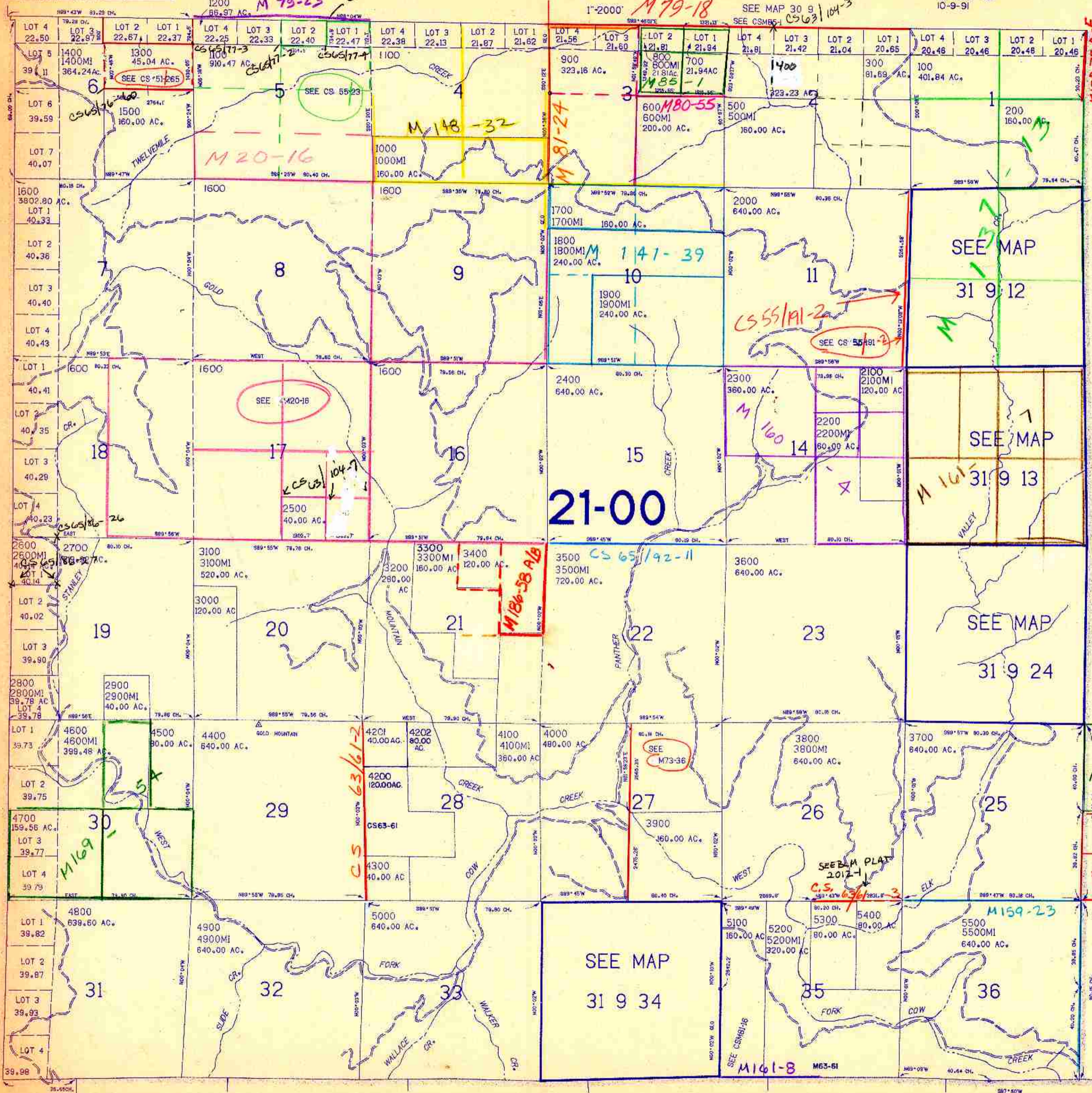
T.31S. R.9W. W.M. DOUGLAS COUNTY

REVISED ON 10-9-91

31 9

& INDEX

COOS COUNTY



21-00

SEE MAP 31 9 34

SEE MAP 32 9

31 9 & INDEX

10/91