

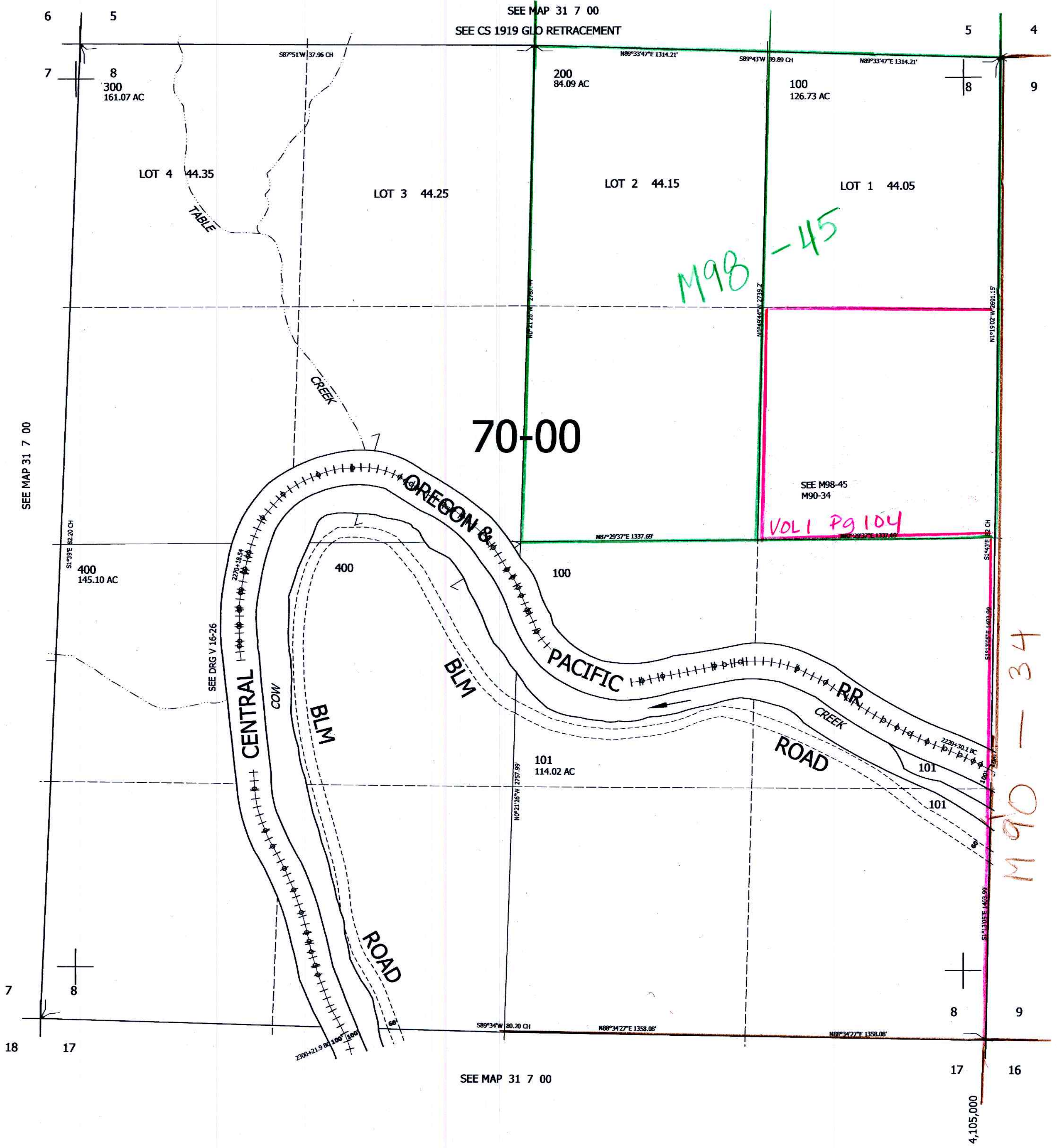
THIS MAP WAS PREPARED FOR
ASSESSMENT PURPOSE ONLY.

SEC.8 T31S. R.7W. W.M.
DOUGLAS COUNTY

1" = 400'

REVISED ON
7-3-19

31 7 8



CANCELLED NO'S
100M1

SEE MAP 31 7 9

459,000

7-11-19
31 7 8
JCV

M90-34

VOL 1 Pg 104

M98-45

SEE MAP 31 7 00

SEE MAP 31 7 00

4,105,000