

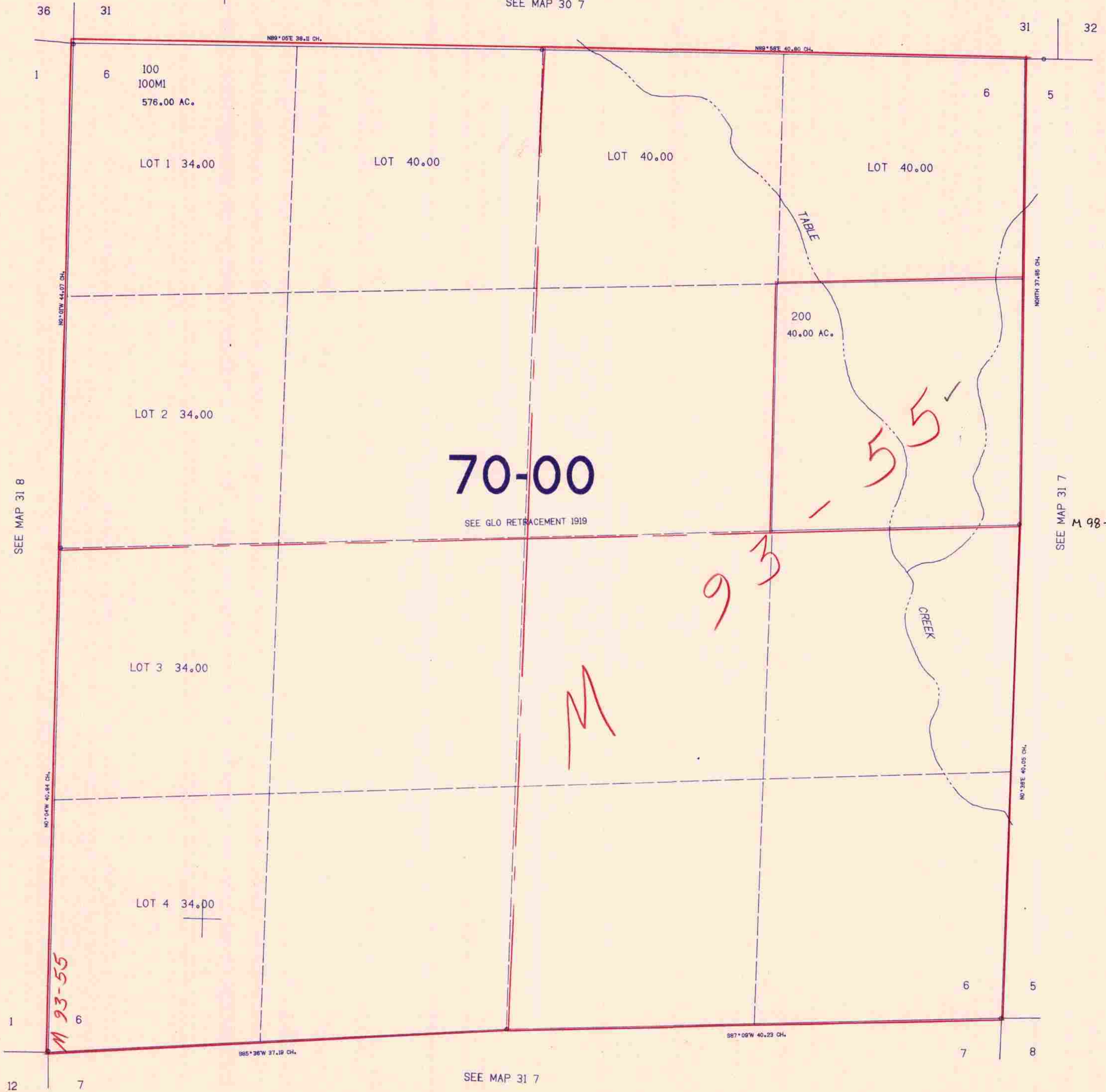
SECTION 6 T.31S. R.7W. W.M.
DOUGLAS COUNTY

31 7 6

THIS MAP WAS PREPARED FOR
ASSESSMENT PURPOSE ONLY.

1"=400'

SEE MAP 30 7



464.000

M 93-55

SEE MAP 31 7

31 7 6

1180.000
2/84