

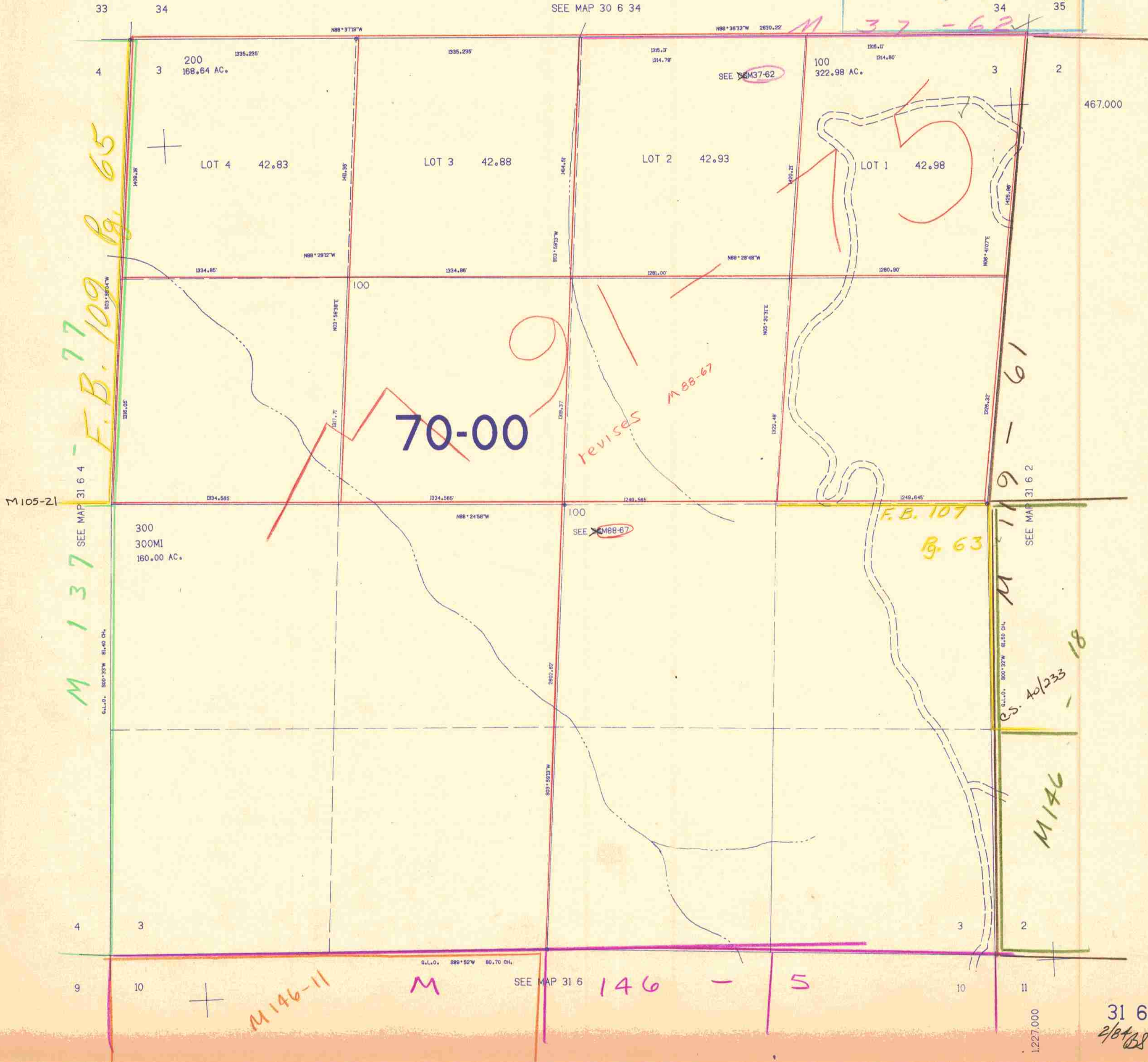
SECTION 3 T.31S. R.6W. W.M.
DOUGLAS COUNTY

31 6 3

THIS MAP WAS PREPARED FOR
ASSESSMENT PURPOSE ONLY.

1"=400'

1994-0012
A-B
UNsurveyed



M 137
SEE MAP 31 6 4
F.B. 77
F.B. 109
B. 65

70-00

revises
M 88-67

F.B. 107
B. 63

M 119 - 61
SEE MAP 31 6 2

M 119 - 62
M 119 - 63
M 119 - 64
M 119 - 65
M 119 - 66
M 119 - 67
M 119 - 68
M 119 - 69
M 119 - 70

M 146

M 146-11

SEE MAP 31 6 146 - 5

31 6 3
2/8/88