

THIS MAP WAS PREPARED FOR ASSESSMENT PURPOSE ONLY.

SEC.2 T31S. R.6W. W.M.
DOUGLAS COUNTY
1" = 400'

REVISED ON
7-21-22

31 6 2

UNSURVED
1994-12
A9B 34

M37

SEE MAP 30 6 35 - 62

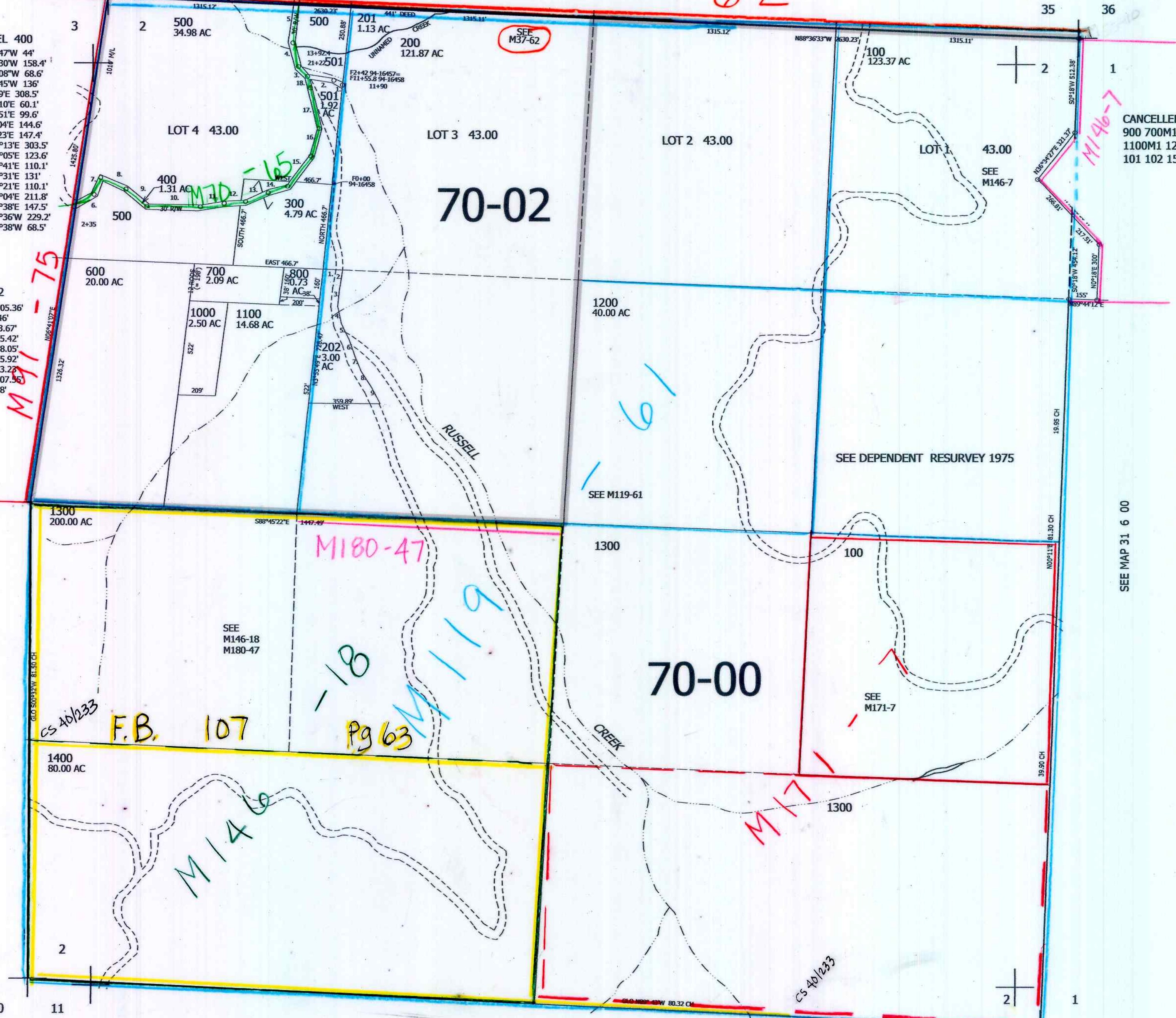
PARCEL 400

1. N57°47'W 44'
2. N84°30'W 158.4'
3. N32°08'W 68.6'
4. N16°45'W 136'
5. N3°19'E 308.5'
6. N54°10'E 60.1'
7. N17°51'E 99.6'
8. S66°04'E 144.6'
9. S52°23'E 147.4'
10. N88°13'E 303.5'
11. N79°05'E 123.6'
12. N82°41'E 110.1'
13. N62°31'E 131'
14. N71°21'E 110.1'
15. N35°04'E 211.8'
16. N12°38'E 147.5'
17. N17°36'W 229.2'
18. N18°38'W 68.5'

PARCEL 202

1. S88°44'09"E 105.36'
2. S8°38'W 106.46'
3. S5°55'28"W 93.67'
4. S12°11'05"E 95.42'
5. S26°15'10"E 98.05'
6. S18°53'27"E 95.92'
7. S22°36'48"E 83.27'
8. S32°47'03"E 107.55'
9. S27°38'51"E 98'

SEE MAP 31 6 3



CANCELLED
900 700M1 1000M1
1100M1 1200M1 1400M1
101 102 1500 1600

SEE MAP 31 6 00

SEE MAP 31 6 00

462,000

8/2022
SC

31 6 2