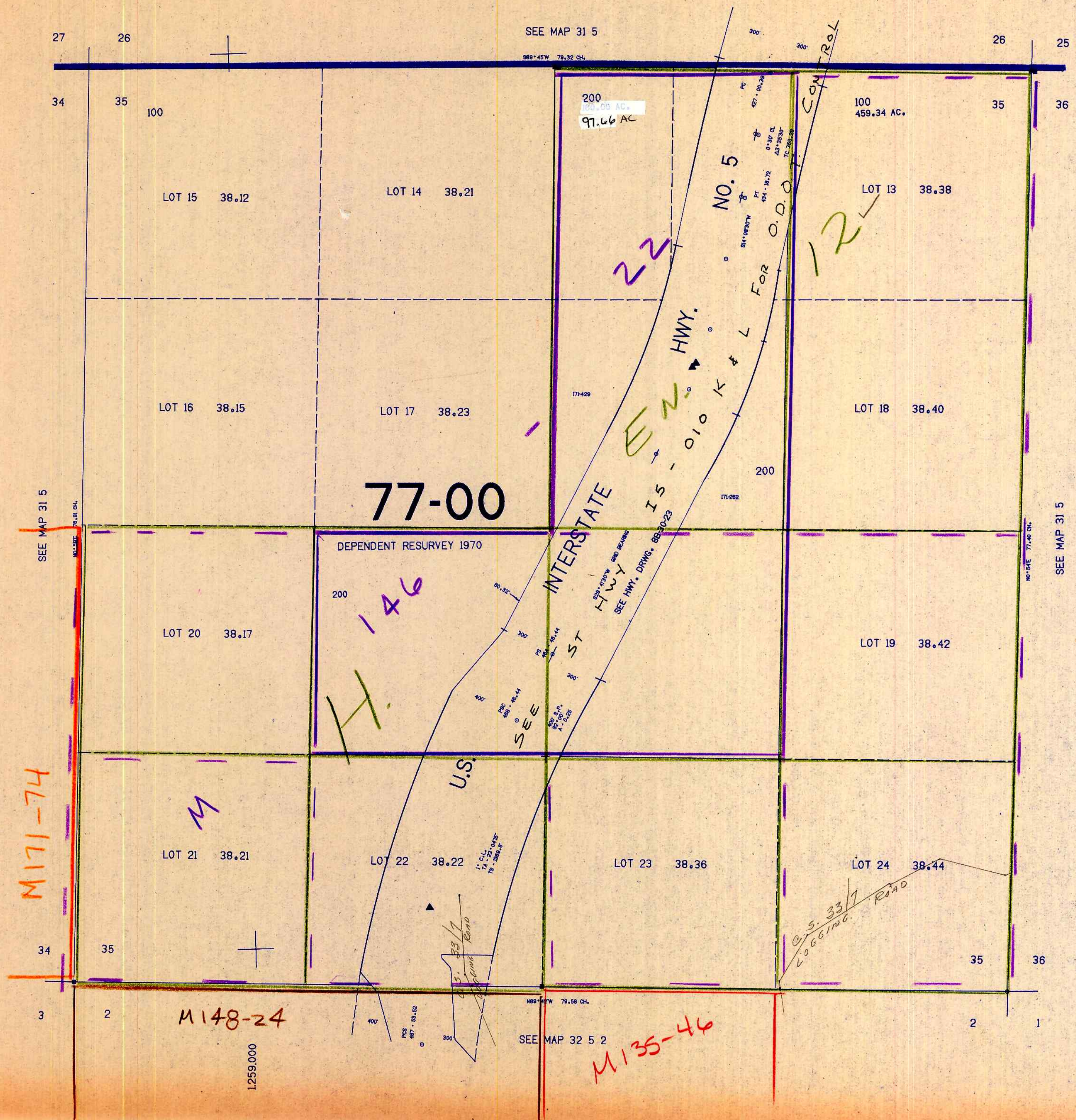


SECTION 35 T.31S. R.5W. W.M.
DOUGLAS COUNTY

31 5 35

THIS MAP WAS PREPARED FOR
ASSESSMENT PURPOSE ONLY.

1"=400'



SEE MAP 31 5

989°45'W 79.32 CH.

200
100.00 AC.
97.66 AC

SURVEY

CONTROL

NO. 5

FOR O.D.O.

INTERSTATE HWY.
IS - 010 K & L

U.S. ST

77-00

DEPENDENT RESURVEY 1970

C.S. 337
LOGGING ROAD

U.S.

SEE MAP 31 5

NO. 58E 76.81 CH.

SEE MAP 31 5

NO. 54E 77.00 CH.

SEE MAP 32 5 2

NO. 54W 79.58 CH.

M148-24

M135-44

M171-74

1.259.000

435.000

31 5 35

12/83/jk