

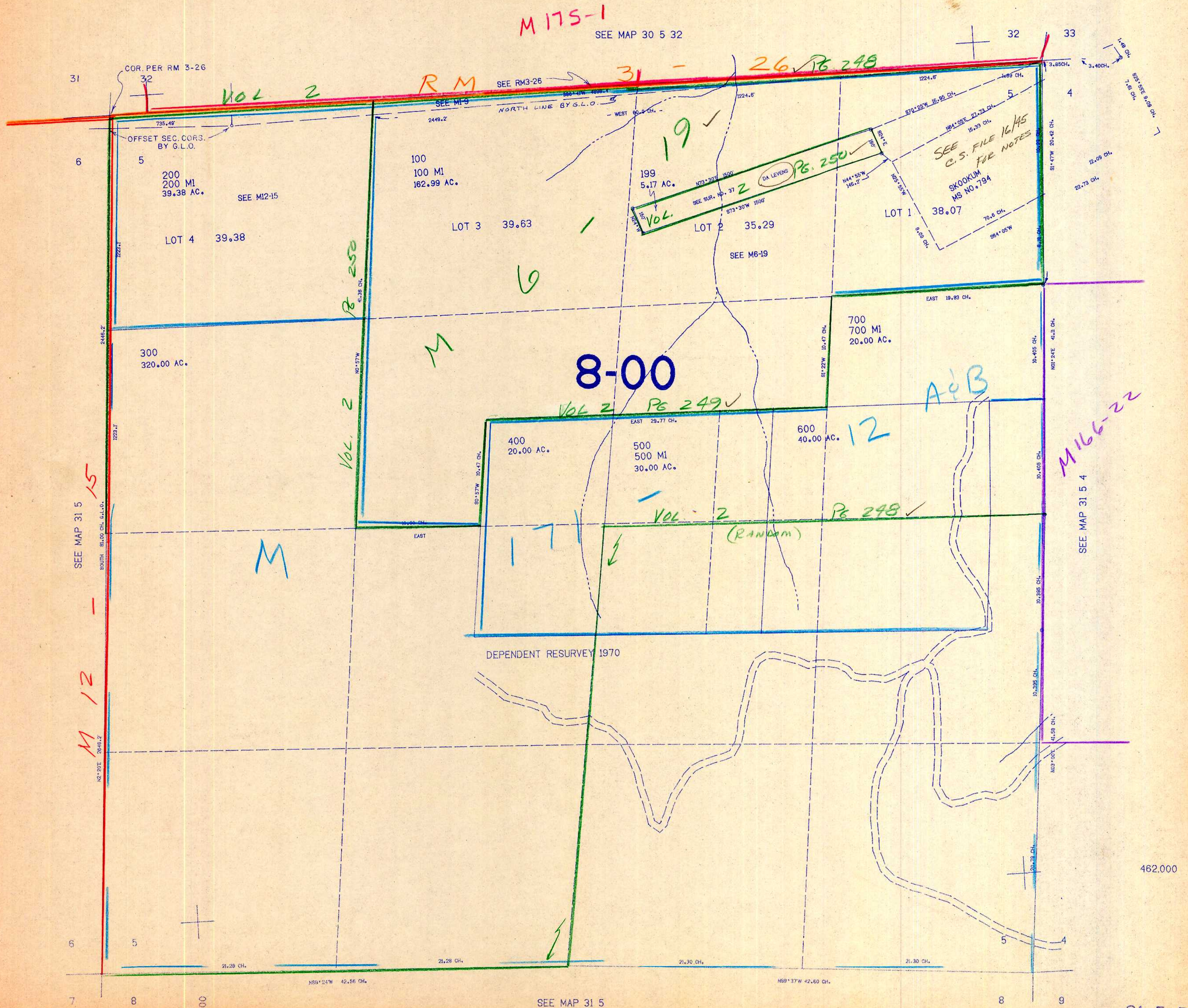
SECTION 5 T.31S. R.5W. W.M.
DOUGLAS COUNTY

REVISED ON
8-21-91

31 5 5

THIS MAP WAS PREPARED FOR
ASSESSMENT PURPOSE ONLY.

1"=400'



SEE MAP 31 5
M 12

SEE MAP 31 5

SEE MAP 31 5 4

31 5 5

9/1/91
SP