

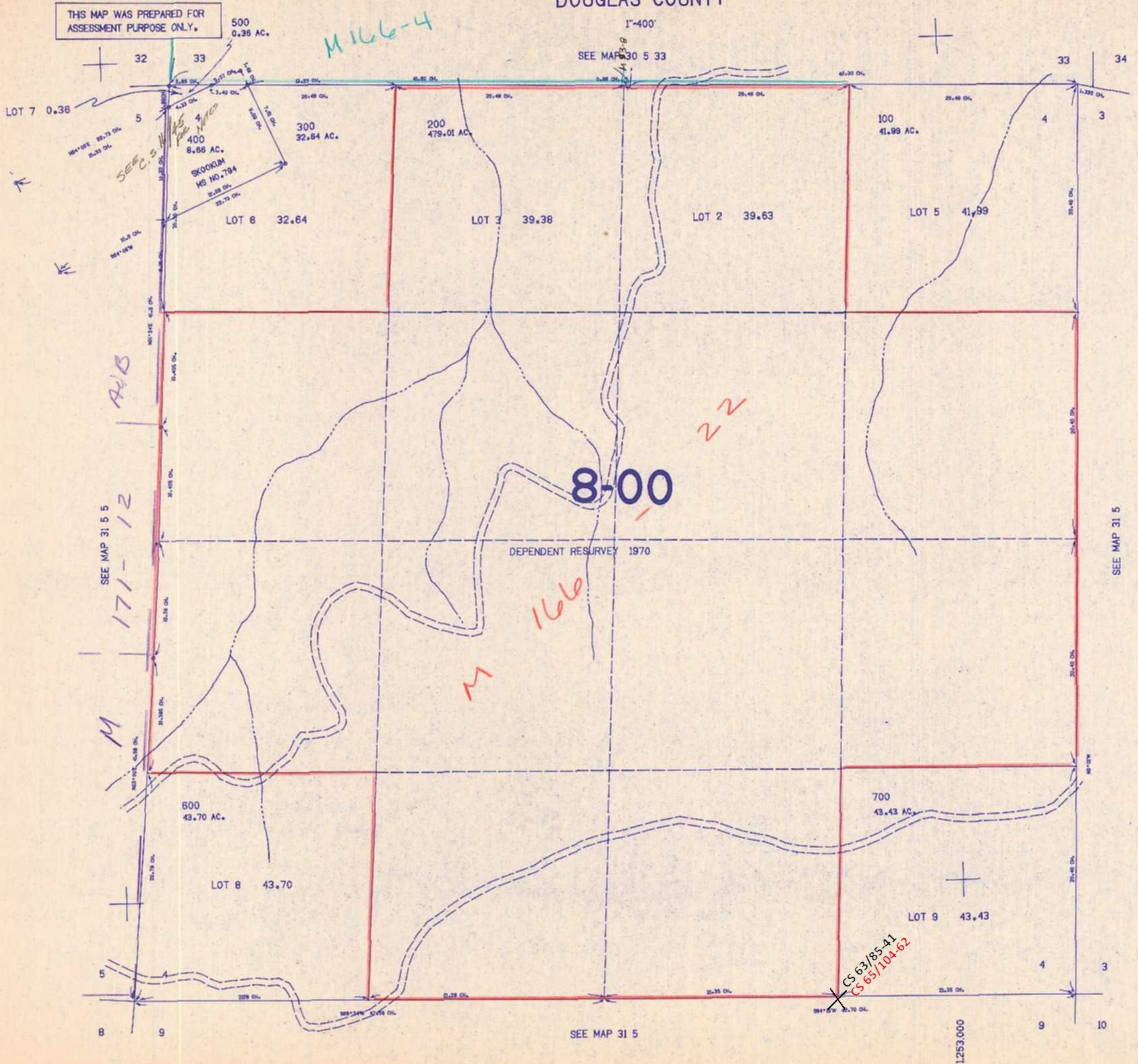
SECTION 4 T.31S. R.5W. W.M.  
DOUGLAS COUNTY

31 5 4

THIS MAP WAS PREPARED FOR  
ASSESSMENT PURPOSE ONLY.

1"=400'

SEE MAP 30 5 33



SEE MAP 31 5 5  
171-12

M

A&B

M 166-4

8-00

166

22

M

CS 63/85-41  
CS 65/104-62

SEE MAP 31 5

SEE MAP 31 5

1253.000

462.000

31 5 4

2/23/78