

SECTION 36 T.31S. R.4W. W.M.
DOUGLAS COUNTY

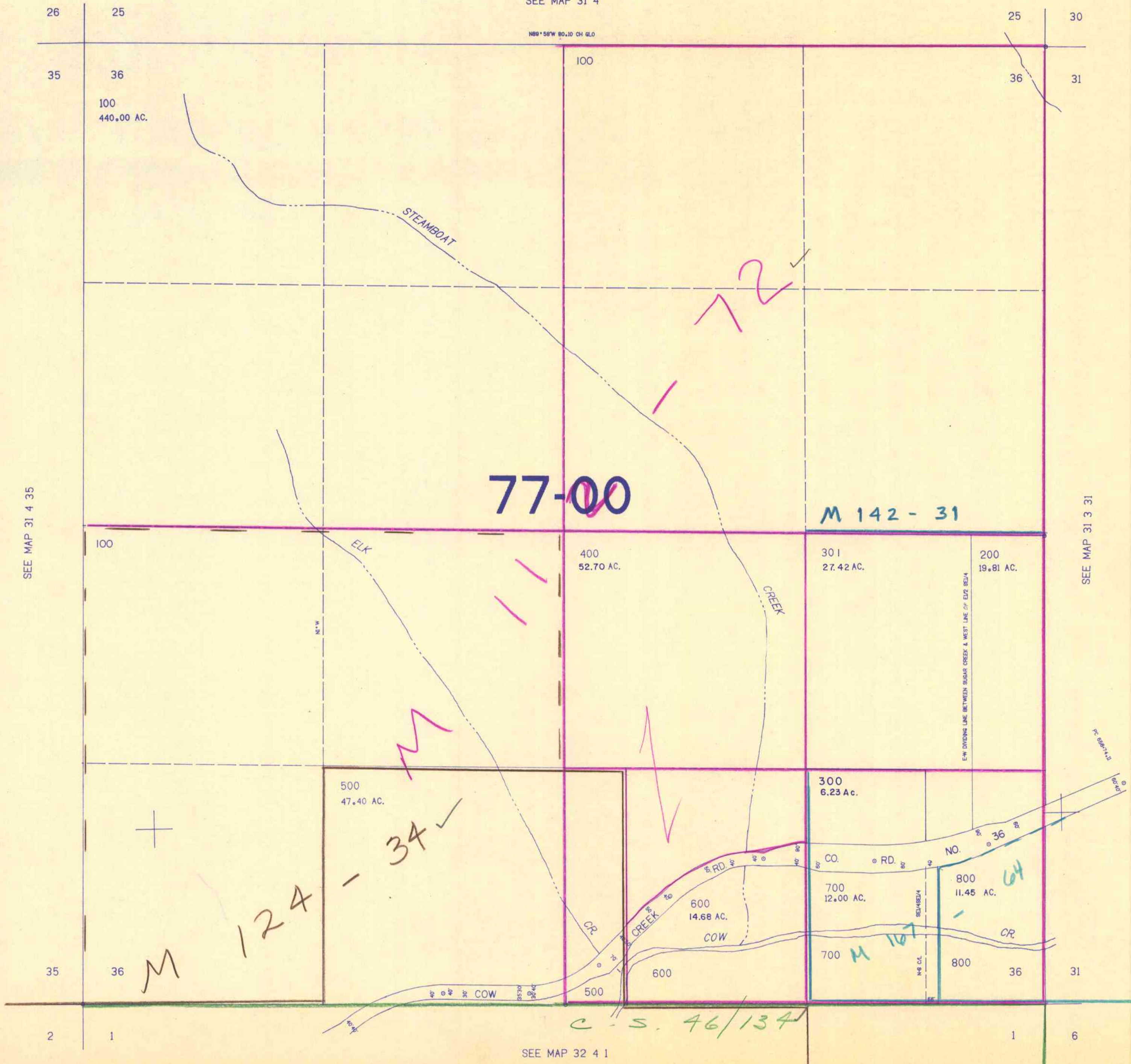
31 4 36

THIS MAP WAS PREPARED FOR
ASSESSMENT PURPOSE ONLY.

1"=400'

SEE MAP 31 4

N88°58'W 80.10 CH 62.0



SEE MAP 31 4 35

SEE MAP 31 3 31

77-00

M 142 - 31

M 124 - 34

C-S. 46/134

SEE MAP 32 4 1

31 4 36

1/92