

SECTION 35 T.31S. R.4W. W.M.  
DOUGLAS COUNTY

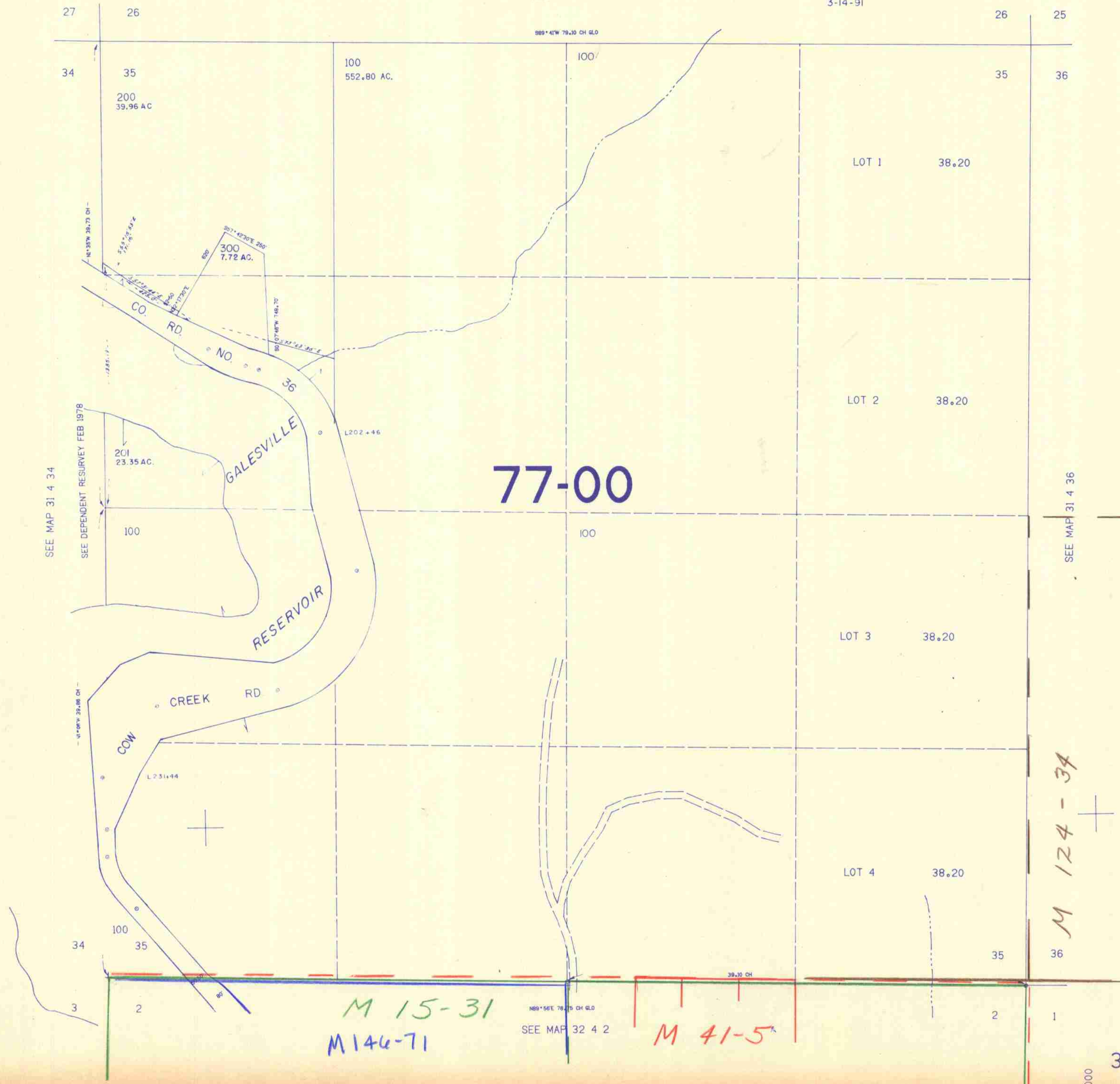
31 4 35

THIS MAP WAS PREPARED FOR  
ASSESSMENT PURPOSE ONLY.

1"=400'

SEE MAP 31 4

REVISED ON  
3-14-91



SEE MAP 31 4 34

SEE DEPENDENT RESURVEY FEB 1978

SEE MAP 31 4 36

M 15-31  
M 146-71

SEE MAP 32 4 2

M 41-5

M 124-34

435,000

1,295,000

31 4 35

3/91  
C.M.H.