

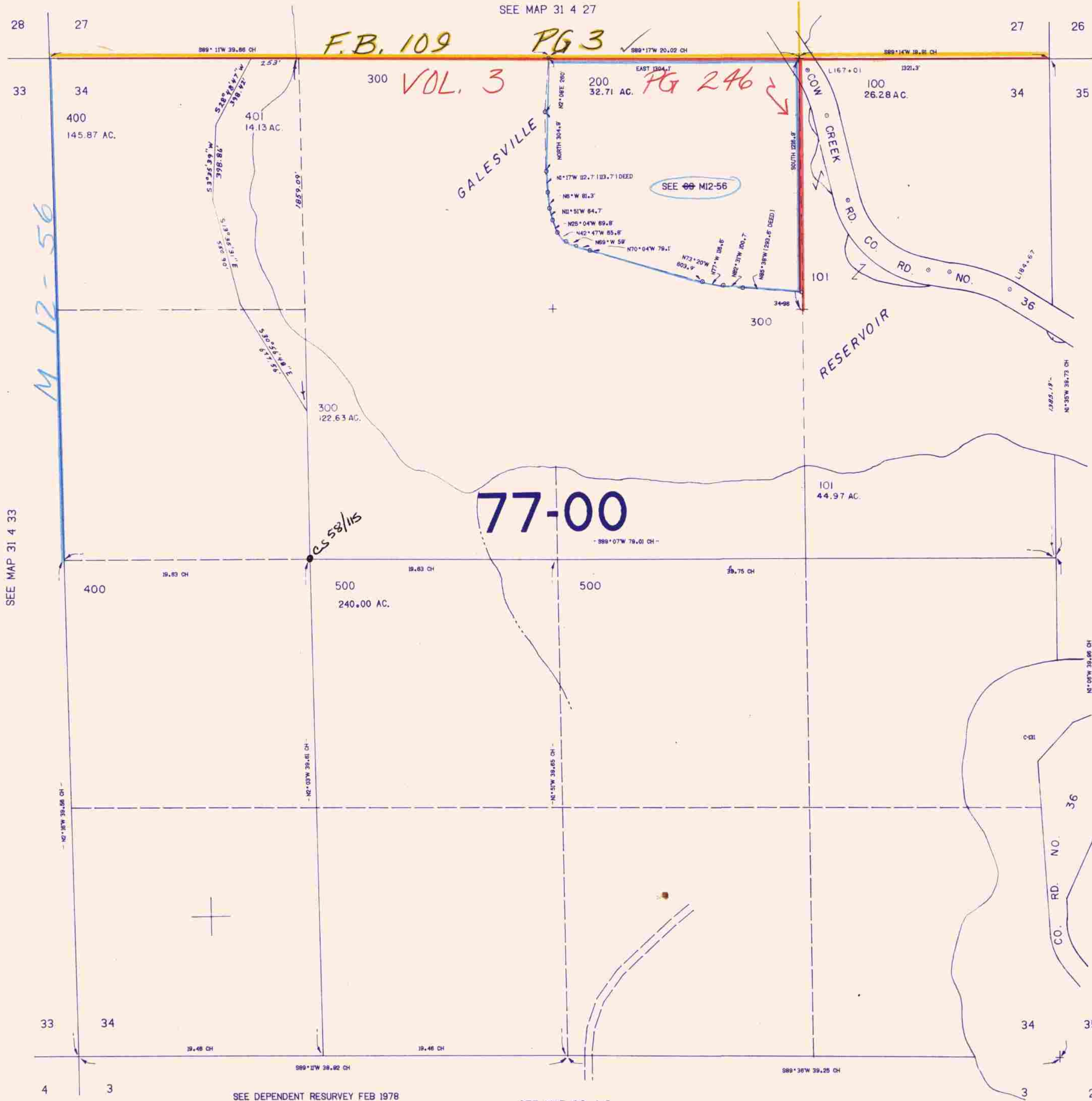
SECTION 34 T.31S. R.4W. W.M.
DOUGLAS COUNTY

31 4 34

THIS MAP WAS PREPARED FOR
ASSESSMENT PURPOSE ONLY.

1"=400'

REVISED ON
3-14-91



SEE DEPENDENT RESURVEY FEB 1978

SEE MAP 32 4 3

31 4 34

3/91
[Signature]