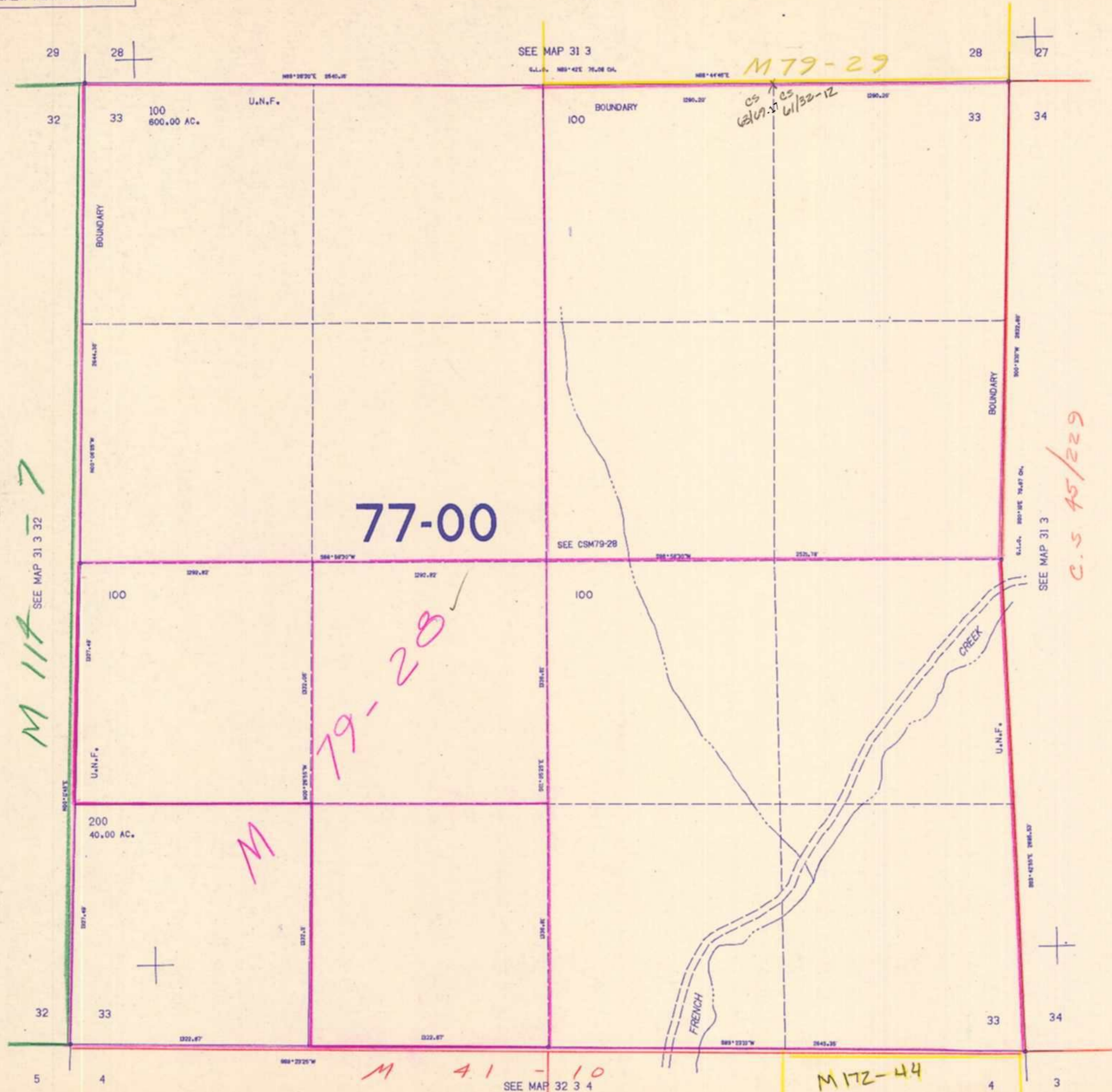


SECTION 33 T.31S. R.3W. W.M.
DOUGLAS COUNTY

31 3 33

THIS MAP WAS PREPARED FOR
ASSESSMENT PURPOSE ONLY.

1"=400'



M 117 SEE MAP 31 3 32

77-00

79-28

M

M 41-10 SEE MAP 32 3 4

M 179-29

M 172-44

SEE MAP 31 3
C.S. 45/229

1.311,000

434,000

31 3 33

105R